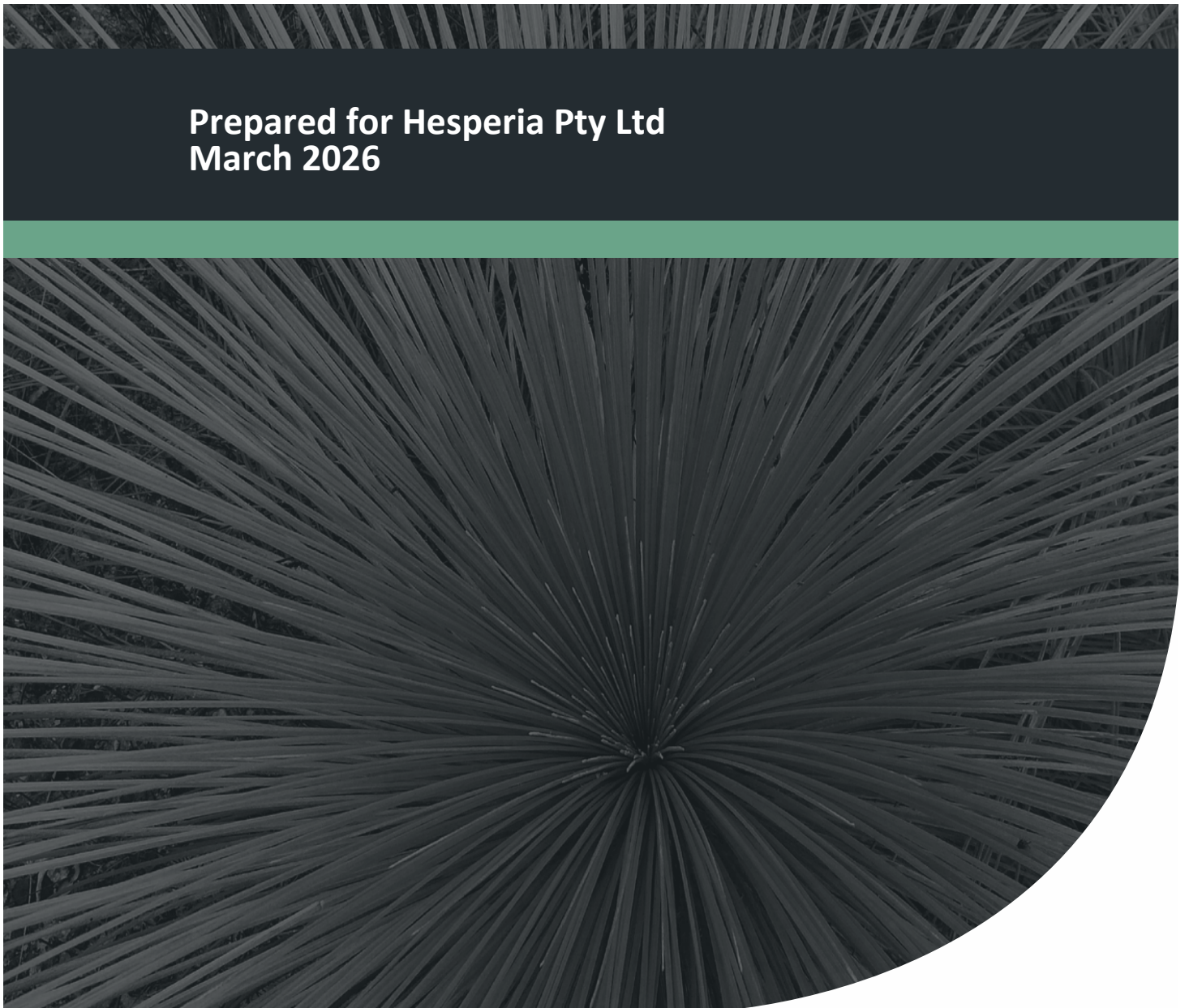


Bushfire Attack Level Assessment

Rivermark Area 3 - Stage 5B

Project No: EP19-105(67)

**Prepared for Hesperia Pty Ltd
March 2026**



Bushfire Attack Level Assessment

Rivermark Area 3 - Stage 5B



Document Control

Doc name: Bushfire Attack Level Assessment Rivermark Area 3 - Stage 5B					
Doc no.: EP19-105(67)--163 CNV					
Version	Date	Author		Reviewer	
1	March 2026	Callum Vane	CNV	Pascal Scholz	PPS
				Anthony Rowe	AJR
Report issued to client.					

Disclaimer:

This document has been prepared in good faith and is derived from sources believed to be reliable and accurate at the time of publication. Nevertheless, this publication is distributed on the terms and understanding that the author is not responsible for the results of any actions taken based on information in this publication or for any error in or omission from this publication.

The content of this document has been prepared primarily to consider the layout of the development or the appropriate building construction standard, where relevant. The measures outlined are considered to be prudent minimum standards only based on the relevant experience of the author and the standards prescribed by the relevant authorities. The level of implementation of the fire precautions achieved will depend upon the actions of the landowner or occupiers of the land and is not the responsibility of the author. The relevant local government and fire authority (i.e. Department of Fire and Emergency Services or local bushfire brigade) should be approached for guidance on preparing for and responding to a bushfire.

Notwithstanding the precautions adopted in this report, it should always be remembered that bushfires burn under a wide range of conditions. An element of risk, no matter how small always remains. The objective of the Australian Standard AS 3959-2018 is to "prescribe particular construction details for buildings to reduce the risk of ignition from a bushfire while the front passes" (Standards Australia 2018). Building to the standards outlined in AS 3959 does not guarantee a building will survive a bushfire or that lives will not be lost.

Bushfire Attack Level Assessment

Rivermark Area 3 - Stage 5B



Table of Contents

1	Introduction	1
1.1	Background	1
1.2	Aim of this report.....	2
1.3	Statutory policy and framework	2
2	BAL Assessment.....	3
2.1	Assessment inputs	4
2.1.1	Vegetation classification	6
2.1.2	Assessment Inputs	11
2.2	Assessment outputs.....	12
2.3	Construction of buildings and ongoing management.....	14
2.3.1	Construction of buildings	14
2.3.2	Ongoing management.....	14
3	Certification by Bushfire Consultant.....	15
3.1	Accreditation.....	15
3.2	Declaration.....	15
4	References	16
4.1	General references	16
4.2	Online references.....	16

List of Tables

Table 1: Summary of BAL ratings, heat flux thresholds and associated construction standards, as outlined within AS 3959	3
Table 2: AS3959 Vegetation classification (refer to Figure 2)	6
Table 3: AS 3959 vegetation classification and effective slope applicable to the site	12
Table 4: Setback distances based on vegetation classification and effective slope and Table 2.5 of AS 3959, as determined by the method 1 BAL assessment.	13

List of Plates

Plate 1: Areas within and surrounding the site, identified as ‘designated bushfire prone’ (under the state-wide Map of Bush Fire Prone Areas (OBRM 2025), is indicated in purple	1
Plate 2: The fuel layers in a forest environment that could be associated with fire behaviour (Gould et al. 2007)	4

Figures

Figure 1: Site Location
Figure 2: Site Assessment Results and Topographic Contours
Figure 3: Bushfire Attack Level Contour Plan
Figure 3: Bushfire Attack Level Ratings for Individual Lots

Appendices

Appendix A

BAL Assessment Certificate

Bushfire Attack Level Assessment

Rivermark Area 3 - Stage 5B



Bushfire Attack Level Assessment

Rivermark Area 3 - Stage 5B



List of Abbreviations

Table A1: Abbreviations – General terms

General terms	
AHD	Australian Height Datum
APZ	Asset Protection Zone
AS 3959	<i>Australian Standard 3959-2018 Construction of buildings in bushfire prone areas</i>
BAL	Bushfire Attack Level
BMP	Bushfire Management Plan
BPAD	Bushfire Planning and Design
FDI	Fire Danger Index
FZ	Flame Zone

Table A2: Abbreviations – Organisations

Organisations	
DFES	Department of Fire and Emergency Services
OBRM	Office of Bushfire Risk Management
WAPC	Western Australian Planning Commission

Bushfire Attack Level Assessment

Rivermark Area 3 - Stage 5B

1 Introduction

1.1 Background

This Bushfire Attack Level (BAL) Assessment has been prepared on behalf of Hesperia Pty Ltd (the proponent) to support the future construction of residential buildings within Stage 5B of Area 3 of the Rivermark Estate, Viveash, in the City of Swan (herein referred to as ‘the site’). The location of the site is shown in **Figure 1**. It is bounded by Stage 5A of Rivermark Area 3 (WAPC reference 200609) to the north, Cranwood Crescent to the west and south, and Jack Williamson Park to the east. The site includes the development of 33 residential lots (**Figure 1**).

The entirety of the site is located within an ‘Area 2’ bushfire-prone area under the state-wide *Map of Bush Fire Prone Areas* as prepared by the Office of Bushfire Risk Management (OBRM) (OBRM 2025), as shown in **Plate 1** below. Where a Class 1, Class 2, Class 3 or associated Class 10a building is proposed to be located in an area identified as ‘Bushfire prone area’, a Bushfire Attack Level (BAL) assessment in accordance with *Australian Standard AS 3959 – 2018 Construction of buildings in bushfire prone areas* (Standards Australia 2018) (AS 3959) is required to support the relevant building permit application to determine any related construction requirements.

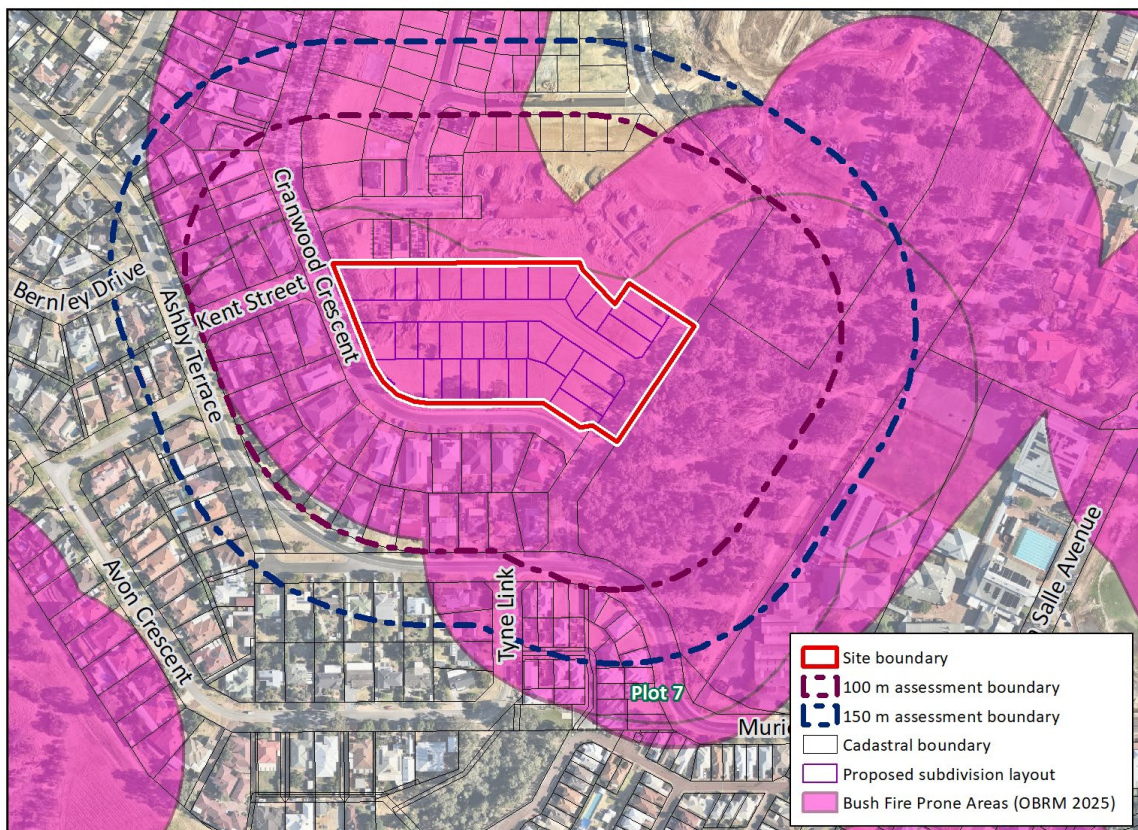


Plate 1: Areas within and surrounding the site, identified as ‘designated bushfire prone’ (under the state-wide *Map of Bush Fire Prone Areas* (OBRM 2025)), is indicated in purple

Bushfire Attack Level Assessment

Rivermark Area 3 - Stage 5B



1.2 Aim of this report

This BAL assessment aims to assess classified vegetation and effective slope in accordance with Method 1 of AS 3959 to determine the applicable BAL ratings for future habitable buildings within the site. It is based on identifying the lot as the 'building', given that the specific building location within the lot is unknown.

The outcomes of this assessment can be used to support the building permit application process.

1.3 Statutory policy and framework

The following key legislation, policies and guidelines are relevant to the preparation of a BAL assessment:

- *Planning and Development Act 2005* and *Planning and Development (Local Planning Scheme Amendment) Regulations 2015*
- *State Planning Policy 3.7 Bushfire* (WAPC 2024b)
- *Planning for Bushfire Guidelines – For the implementation of State Planning Policy 3.7 Bushfire* (WAPC 2024a)
- *Australian Standard AS 3959 – 2018 Construction of buildings in bushfire prone areas* (AS 3959) (Standards Australia 2018).

Bushfire Attack Level Assessment

Rivermark Area 3 - Stage 5B



2 BAL Assessment

A Method 1 BAL assessment has been completed for the site in accordance with AS 3959. This assessment considers the vegetation classification and effective slope for the site and the surrounding 150 m to determine the applicable BAL ratings.

AS 3959 specifies requirements for the construction of buildings in bushfire-prone areas to improve their resistance to bushfire attack from embers, burning debris, radiant heat, flame contact, and combinations of these attack forms. It provides six BAL ratings: BAL-LOW, BAL-12.5, BAL-19, BAL-29, BAL-40 and BAL-FZ, based on the radiant heat flux thresholds from vegetation within 100 m of a building. Each BAL rating is associated with specific national construction requirements, which have been summarised in **Table 1** below.

It is relevant to note that while buildings constructed to increased standards based on BAL ratings assessed under AS 3959 are more likely to survive a bushfire than buildings that do not conform to these construction standards, building survival is not guaranteed.

Table 1: Summary of BAL ratings, heat flux thresholds and associated construction standards, as outlined within AS 3959

Bushfire Attack Level (BAL)	Classified vegetation within 100 m of the subject building and heat flux exposure thresholds	Description of the predicted bushfire attack and levels of exposure	Construction section (within AS 3959)
BAL-LOW	See Section 2.2.3.2 of AS 3959	There is insufficient risk to warrant specific construction requirements	4
BAL-12.5	$\leq 12.5 \text{ kW/m}^2$	Ember attack	3 & 5
BAL-19	$> 12.5 \text{ kW/m}^2$ to $\leq 19 \text{ kW/m}^2$	Increasing levels of ember attack and burning debris ignited by windborne embers, blown together with increasing heat flux	3 & 6
BAL-29	$> 19 \text{ kW/m}^2$ to $\leq 29 \text{ kW/m}^2$	Increasing levels of ember attack and burning debris ignited by windborne embers, blown together with increasing heat flux	3 & 7
BAL-40	$> 29 \text{ kW/m}^2$ to $\leq 40 \text{ kW/m}^2$	Increasing levels of ember attack and burning debris ignited by windborne embers, blown together with the increased likelihood of exposure to flame	3 & 8
BAL-FZ	$> 40 \text{ kW/m}^2$	Direct exposure to flames from a fire front, in addition to heat flux and ember attack	3 & 9

Not all vegetation is classified as a bushfire risk. Vegetation and ground surfaces that are exempt from classification as a potential hazard are identified as a low threat under Section 2.2.3.2 of AS 3959.

Bushfire Attack Level Assessment

Rivermark Area 3 - Stage 5B

2.1 Assessment inputs

The classification of vegetation within the site and the surrounding 100 m has been undertaken in accordance with AS 3959. The assignment of vegetation classifications is based on Section 2.2.3 and Table 2.3 of AS 3959 and generally considers the various fuel layers of different vegetation types. For example, fuel layers in a typical forest environment can be broken down into five segments as illustrated in **Plate 2** below.

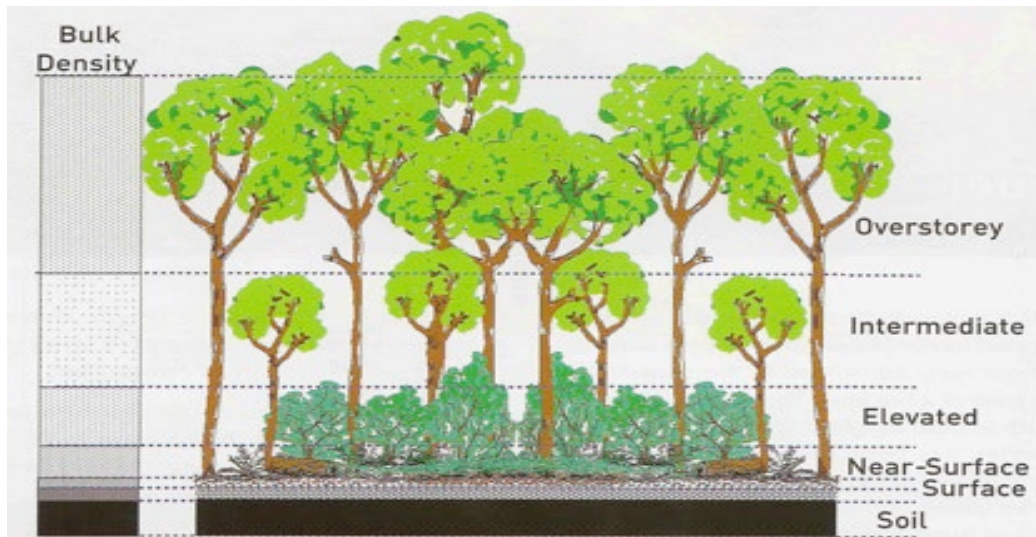


Plate 2: The fuel layers in a forest environment that could be associated with fire behaviour (Gould et al. 2007)

The site has been inspected by Emerge Associates on multiple occasions in 2025. The latest assessment within the site and the surrounding 150 m in accordance with AS 3959 was undertaken on 24 February 2026. **Table 2** The following outlines the determined vegetation classifications and associated effective slope, and, where relevant, outlines the existing management practices that have informed the vegetation classification. The plots referenced in **Table 2** are also shown in **Figure 2**.

The assessment determined that classifiable vegetation currently occurs and will occur (subject to future landscaping) within 100 m of the site. The primary bushfire hazards that inform the BAL assessment are detailed in **Figure 2** and are identified as the following:

- **Forest (Class A):** Located externally to the east, north-east and south-east of the site within the Jack Williamson Park reserve, assumed to remain in its current unmanaged state, representing a long-term bushfire hazard.
- **Woodland (Class B):** That will ultimately be located externally to the north-east of the site within the Jack Williamson Oval and surrounding landscape areas. At the time of inspection, areas associated with Jack Williamson Oval were predominantly cleared in preparation for future landscape treatments. Portions surrounding the oval will be subject to revegetation to a woodland type of classification as per an agreement with the City of Swan.
- **Grassland (Class C):** A future drainage swale directly abutting Jack Williamson Park running parallel with the eastern site boundary will be revegetated with low-growing native sedges and reeds.

Bushfire Attack Level Assessment

Rivermark Area 3 - Stage 5B



Vegetation has been cleared within the entirety of the site to enable development. These areas currently comprise subdivided residential lots, constructed roads and footpaths and are under the control of the proponent. All vegetation within Area 3 Middle Swan Brickworks – Lot 9009, as per the BMP, has been either removed or managed to low threat in accordance with Clause 2.2.3.2 (f) of AS 3959. Continuous management of these areas by the proponent (until lots are sold and landscape treatments are finalised) include:

- Regular removal of weeds and built-up dead material (such as fallen branches, leaf litter, etc.).
- Low pruning of trees (removal of branches below 2 meters in height where appropriate).
- Removal of understorey vegetation such as dense shrubs underneath trees.
- Regular mowing/slashing of grass to less than 100 mm in height.

Bushfire Attack Level Assessment
Rivermark Area 3 - Stage 5B



2.1.1 Vegetation classification

Each distinguishable plot with the potential to determine the BAL is identified in **Table 2** and shown in **Figure 2**.

Table 2: AS3959 Vegetation classification (refer to Figure 2)

Photo ID:	1	Plot:	1	
Vegetation classification or exclusion clause (and effective slope)				
Class A - Forest (downslope 0-5)				
Description / Justification for Classification				
Forest (Class A) vegetation has been identified immediately to the north-east of the site. This area comprises trees reaching heights of 10 – 15 metres, with more than 30% foliage cover. The understorey is primarily composed of juvenile trees and shrubs. This vegetation is part of the future local reserve, Jack Williamson Park, and is assumed to remain unmanaged from a bushfire perspective and will continue to be a long-term hazard.				
Class A - Forest (downslope 0-5)				
Description / Justification for Classification				
Forest (Class A) vegetation has been identified immediately to the south-east of the site. This area comprises trees reaching heights of 10 – 15 metres, with more than 30% foliage cover. The understorey is primarily composed of juvenile trees and shrubs. This vegetation is part of the future local reserve, Jack Williamson Park, and is assumed to remain unmanaged from a bushfire perspective and will continue to be a long-term hazard.				
Class A - Forest (downslope 0-5)				

Bushfire Attack Level Assessment

Rivermark Area 3 - Stage 5B



Table 2: AS3959 Vegetation Classification (refer to Figure 2)(continued)

Photo ID: 3	Plot: 1	
Vegetation classification or exclusion clause (and effective slope)		
Class A - Forest (downslope 0-5)		
Description / Justification for Classification		
Forest (Class A) vegetation has been identified immediately to the north-east of the site. This area comprises trees reaching heights of 10 – 15 metres, with more than 30% foliage cover. The understorey is primarily composed of juvenile trees and shrubs. This vegetation is part of the future local reserve, Jack Williamson Park, and is assumed to remain unmanaged from a bushfire perspective and will continue to be a long-term hazard.		
Photo ID: 4	Plot: 1	
Vegetation classification or exclusion clause (and effective slope)		
Class A - Forest (downslope 0-5)		
Description / Justification for Classification		
Forest (Class A) vegetation has been identified immediately to the -east of the site. This area comprises trees reaching heights of up to 10m, with more than 30% foliage cover. The understorey is primarily composed of juvenile trees and shrubs. This vegetation is part of the future local reserve, Jack Williamson Park, and is assumed to remain unmanaged from a bushfire perspective and will continue to be a long-term hazard.		
Photo ID: 5	Plot: 2	
Vegetation classification or exclusion clause (and effective slope)		
Class B - Woodland (downslope 0-5)		
Description / Justification for Classification		
Photo showing the future location of Woodland (Class B) to the north-east of the site. At the time of inspection, the area was cleared for construction. As per the BMP, this area will be modified as part of implementing a managed interface with the forest to the east of the site, as agreed with the City of Swan. Based on the required understorey management, this vegetation will be revegetated to woodland conditions (Class B) in the future comprising trees 10-15 metres tall with less than 30% foliage cover; the understorey will predominantly consist of grassland. This will ensure BAL ratings reflect the known final outcome for the area.		

Bushfire Attack Level Assessment
Rivermark Area 3 - Stage 5B



Table 2: AS3959 Vegetation Classification (refer to Figure 2)(continued)

<p>Photo ID: 6</p>	<p>Plot: 4</p>	
<p>Vegetation classification or exclusion clause (and effective slope)</p>		
<p>Exclusion 2.2.3.2 (e) non-vegetated</p>		
<p>Description / Justification for Classification</p>		
<p>Non-vegetated areas internal to the site are currently undergoing earthworks in line with the approved subdivisions and engineering drawings. These areas consist of bare sand fill and have been excluded in accordance with Clause 2.2.3.2 (e). They will form future lots, which will also be excluded as low threat in the long-term.</p>		
<p>Photo ID: 7</p>	<p>Plot: 4</p>	
<p>Vegetation classification or exclusion clause (and effective slope)</p>		
<p>Exclusion 2.2.3.2 (e) non-vegetated</p>		
<p>Description / Justification for Classification</p>		
<p>Non-vegetated areas internal to the site are currently undergoing earthworks in line with the approved subdivisions and engineering drawings. These areas consist of bare sand fill and have been excluded in accordance with Clause 2.2.3.2 (e). They will form future lots, which will also be excluded as low threat in the long-term.</p>		
<p>Photo ID: 8</p>	<p>Plot: 4</p>	
<p>Vegetation classification or exclusion clause (and effective slope)</p>		
<p>Exclusion 2.2.3.2 (e) non-vegetated</p>		
<p>Description / Justification for Classification</p>		
<p>Non-vegetated areas (lots and roads) identified to the north of the site, which have been excluded in accordance with Clause 2.2.3.2 (e). This is a view of completed Stage 3 of development with residential construction currently underway. While future residential gardens will be present and will be excluded as low threat (f) for ease of reference, they will be shown as non-vegetated as part of future lots.</p>		

Bushfire Attack Level Assessment
Rivermark Area 3 - Stage 5B



Table 2: AS3959 Vegetation Classification (refer to Figure 2)(continued)

Photo ID:	9	Plot:	4	
Vegetation classification or exclusion clause (and effective slope)				
Exclusion 2.2.3.2 (e) non-vegetated				
Description / Justification for Classification				
<p>Non-vegetated areas (lots and roads) identified to the south and west of the site, which have been excluded in accordance with Clause 2.2.3.2 (e). While existing residential gardens are present and would be excluded as low threat (f) for ease of reference, they are shown as non-vegetated.</p>				
Photo ID:	10	Plot:	4	
Vegetation classification or exclusion clause (and effective slope)				
Exclusion 2.2.3.2 (e) non-vegetated				
Description / Justification for Classification				
<p>Non-vegetated areas internal to the site are currently undergoing earthworks in line with the approved subdivisions and engineering drawings. These areas consist of bare sand fill and have been excluded in accordance with Clause 2.2.3.2 (e). They will form future lots, which will also be excluded as low threat in the long-term.</p>				
Photo ID:	11	Plot:	5	
Vegetation classification or exclusion clause (and effective slope)				
Exclusion 2.2.3.2 (f) low-threat vegetation				
Description / Justification for Classification				
<p>Feature trees at the south of the site are excluded under clause 2.2.3.2 (f) low-threat vegetation. These trees will be managed with a maintained understorey and pruned branches below 2 metres. They will form part of the future residential gardens, ensuring long-term management as a low threat. At the time of inspection, the management of trees was compliant with the requirements of the BMP and AS 3959.</p>				

Bushfire Attack Level Assessment
Rivermark Area 3 - Stage 5B



Table 2: AS3959 Vegetation classification (refer to Figure 2)

Photo ID:	12	Plot:	5	
Vegetation classification or exclusion clause (and effective slope)				
Exclusion 2.2.3.2 (f) low-threat vegetation				
Description / Justification for Classification				
Vegetation classification or exclusion clause (and effective slope)				
Exclusion 2.2.3.2 (f) low-threat vegetation				
Description / Justification for Classification				
Vegetation classification or exclusion clause (and effective slope)				
Exclusion 2.2.3.2 (f) low-threat vegetation				
Description / Justification for Classification				
Alternative view of future area of Jack Williamson Park north-east of the site which will be an active POS featuring a sports oval. The park will be maintained to low threat requirements determined by the BMP and AS 3959 exclusion clause 2.2.3.2 (f), confirmed by the City of Swan. The area is currently non-vegetated and is being utilised to store material stockpiles for the earthworks and construction of the subdivision.				

Bushfire Attack Level Assessment

Rivermark Area 3 - Stage 5B



2.1.2 Assessment Inputs

The BAL assessment includes the following values:

- **Designated FDI:** 80
- **Flame temperature:** 1090 K
- **Classified or excluded vegetation:** Class A Forest, Class B Woodland, Class G Grassland, Exclusion Clause 2.2.3.2 (e) and (f) as per **Table 2** and **Figure 2**.
- **Effective slope beneath classified vegetation:** Downslope 0-5, flat/ upslope

The following key assumptions have informed this assessment:

- Classified vegetation (Class A Forest) within Jack Williamson Park to the east of the site is assumed to remain unmanaged and therefore a permanent bushfire hazard.
- Classified Woodland (Class B) will ultimately occur within a portion of Jack Williamson Oval to the north-east of the site and is assumed to be a permanent bushfire hazard.
- Classified vegetation (Class G Grassland) within the eastern border of the site (refer to Plot 3 on **Figure 2**) is assumed to be a permanent bushfire hazard as a future vegetated swale abutting the retained forest vegetation linked to Jack Williamson Park.
- Areas of low-threat vegetation or non-vegetated areas identified within 100 m of titled lots where the land is under the control of the proponent will continue to be maintained in accordance with the existing maintenance regimes and will achieve low threat based on Section 2.2.3.2 of AS 3959 until future staged development is progressed.
- Areas of low threat vegetation or non-vegetated areas identified within 100 m of titled lots where land is under the control of the City of Swan will continue to be maintained by the City to achieve low threat.
- The site will be maintained in accordance with the City of Swan Fire Hazard Reduction Notice. Whilst the proponent owns subdivided lots and the balance of the development site (Area 3), maintenance responsibility will remain with the proponent. Once subdivided lots are sold, this requirement will then be with the new landowner.

Bushfire Attack Level Assessment

Rivermark Area 3 - Stage 5B



2.2 Assessment outputs

The vegetation classifications determined in **Section 2.1.1** are summarised in **Table 3** and shown in **Figure 2** and incorporate the known changes to vegetation post-development within the site and the determined effective slope.

Table 3: AS 3959 vegetation classification and effective slope applicable to the site

Plot	Applied vegetation classification	Effective slope
1	Class A – Forest	Downslope 0-5
2	Class B – Woodland	Downslope 0-5
3	Class G - Grassland	Flat / upslope
4	Exclusion 2.2.3.2(e)	Not applicable
5	Exclusion 2.2.3.2(f)	Not applicable

Individual BAL ratings for each lot are shown in **Figure 3**. The BAL ratings are based on the minimum distances outlined in Table 2.5 of AS 3959 for the applicable vegetation classifications and effective slope. The relevant setback distances for the BAL ratings from AS 3959 have been summarised for ease of reference in **Table 4**.

As per the BMP prepared by Emerge Associates, the BAL assessment indicates that lots abutting permanent hazards will be able to support habitable buildings achieving BAL-29 or less. The majority of the lots (and therefore future habitable buildings) on the site will be subject to BAL-12.5 or below. For lots where BAL-40 and BAL-FZ encroach, sufficient area has been provided as part of the lot design to ensure that detailed design can avoid siting habitable buildings within BAL-40/FZ areas. A 9.1 m-wide setback would be required at the front of lots (and is per the previous subdivision approval).

Bushfire Attack Level Assessment

Rivermark Area 3 - Stage 5B



Table 4: Setback distances based on vegetation classification and effective slope and Table 2.5 of AS 3959, as determined by the method 1 BAL assessment.

Plot number (Figure 2)	Vegetation classification (Figure 2)	Effective slope (Figure 2)	Distance to vegetation (from Table 2.5 of AS 3959)	BAL rating (3)
1	Forest (Class A)	Downslope 0-5°	< 20 m	BAL-FZ
			20 - < 27 m	BAL-40
			27 - < 37 m	BAL-29
			37 - < 50 m	BAL-19
			50 - < 100 m	BAL-12.5
			> 100 m	BAL-LOW
2	Woodland (Class B)	Downslope 0-5°	< 13 m	BAL-FZ
			13 - < 17 m	BAL-40
			17 - < 25 m	BAL-29
			25 - < 35 m	BAL-19
			35 - < 100 m	BAL-12.5
			> 100 m	BAL-LOW
3	Grassland (Class G)	Flat/upslope	< 6 m	BAL-FZ
			6 - < 8 m	BAL-40
			8 - < 12 m	BAL-29
			12 - < 17 m	BAL-19
			17 - < 50 m	BAL-12.5
			> 50 m	BAL-LOW

Bushfire Attack Level Assessment

Rivermark Area 3 - Stage 5B



2.3 Construction of buildings and ongoing management

2.3.1 Construction of buildings

Appendix A specifies the BAL rating applicable to each building in the form of a multiple lot BAL certificate and individual certificates for each lot to support the building permit process. Construction requirements applicable to the BAL rating are specified in AS 3959 and summarised in **Table 1**. It is noted that for buildings with a BAL-LOW rating, there is insufficient radiant heat to warrant specific construction requirements, as outlined in Section 4 of AS 3959. It is, however, recommended that consideration be given to the potential for ember attack, which can extend beyond the radiant heat. A BAL—12.5 rating is primarily concerned with protection from ember attack and radiant heat up to and including 12.5 kW/m² where the site is less than 100 m from the source of bushfire attack, as outlined in Section 4 of AS 3959. It is noted that for buildings with a BAL-29 rating, it is primarily concerned with protection from ember attack and radiant heat greater than 19 kW/m² up to and including 29 kW/m².

2.3.2 Ongoing management

All lot owners will be responsible for their own property and ensuring these are maintained to a low threat standard in accordance with Clause 2.2.3.2 (e) or (f) of AS 3959, as per the requirements of the City of Swan Fire Hazard Reduction Notice (as published). Advice on maintaining their property to a low threat standard can be provided by the City.

Bushfire Attack Level Assessment

Rivermark Area 3 - Stage 5B



3 Certification by Bushfire Consultant

3.1 Accreditation

This BAL assessment has been prepared by Emerge Associates who have been providing bushfire risk management advice for more than 12 years, undertaking detailed bushfire assessments (and associated approvals) to support the land use development industry. Emerge Associates have a number of team members who have undertaken Bushfire Planning and Design (BPAD) Level 1 and Level 2 training and are Fire Protection Association of Australia (FPAA) accredited practitioners (or are progressing).

3.2 Declaration

I declare that the information provided is true and correct to the best of my knowledge.

Signature:

A handwritten signature in black ink, appearing to read "Anthony Rowe".

Name: Anthony Rowe

Company: Emerge Associates

Date: 25/03/26

BPAD Accreditation: BPAD no. 36690

Bushfire Attack Level Assessment

Rivermark Area 3 - Stage 5B



4 References

4.1 General references

Office of Bushfire Risk Management (OBRM) 2025, *Map of Bush Fire Prone Areas*, Department of Fire and Emergency Services, <<https://maps.slip.wa.gov.au/landgate/bushfireprone/>>.

Standards Australia 2018, *AS 3959:2018 Construction of buildings in bushfire-prone areas*, Sydney.

Western Australian Planning Commission (WAPC) 2024a, *Planning for Bushfire Guidelines*, Perth.

W. A. P. Commission (WAPC) 2024b, *State Planning Policy 3.7 Busfire*, Western Australia.

4.2 Online references

Department of Water 2008, *LIDAR derived 1 m elevation contours* dataset, Government of Western Australia.

Office of Bushfire Risk Management (OBRM) 2025, *Map of Bush Fire Prone Areas*, viewed March 2026, <https://maps.slip.wa.gov.au/landgate/bushfireprone/>

Bushfire Attack Level Assessment

Rivermark Area 3 - Stage 5B



This page has been left blank intentionally.

Figures

Figure 1: Site Location

Figure 2: Site Assessment Results and Topographic Contours

Figure 3: Bushfire Attack Level Contour Plan

Figure 4: Bushfire Attack Level Ratings for Individual Lots

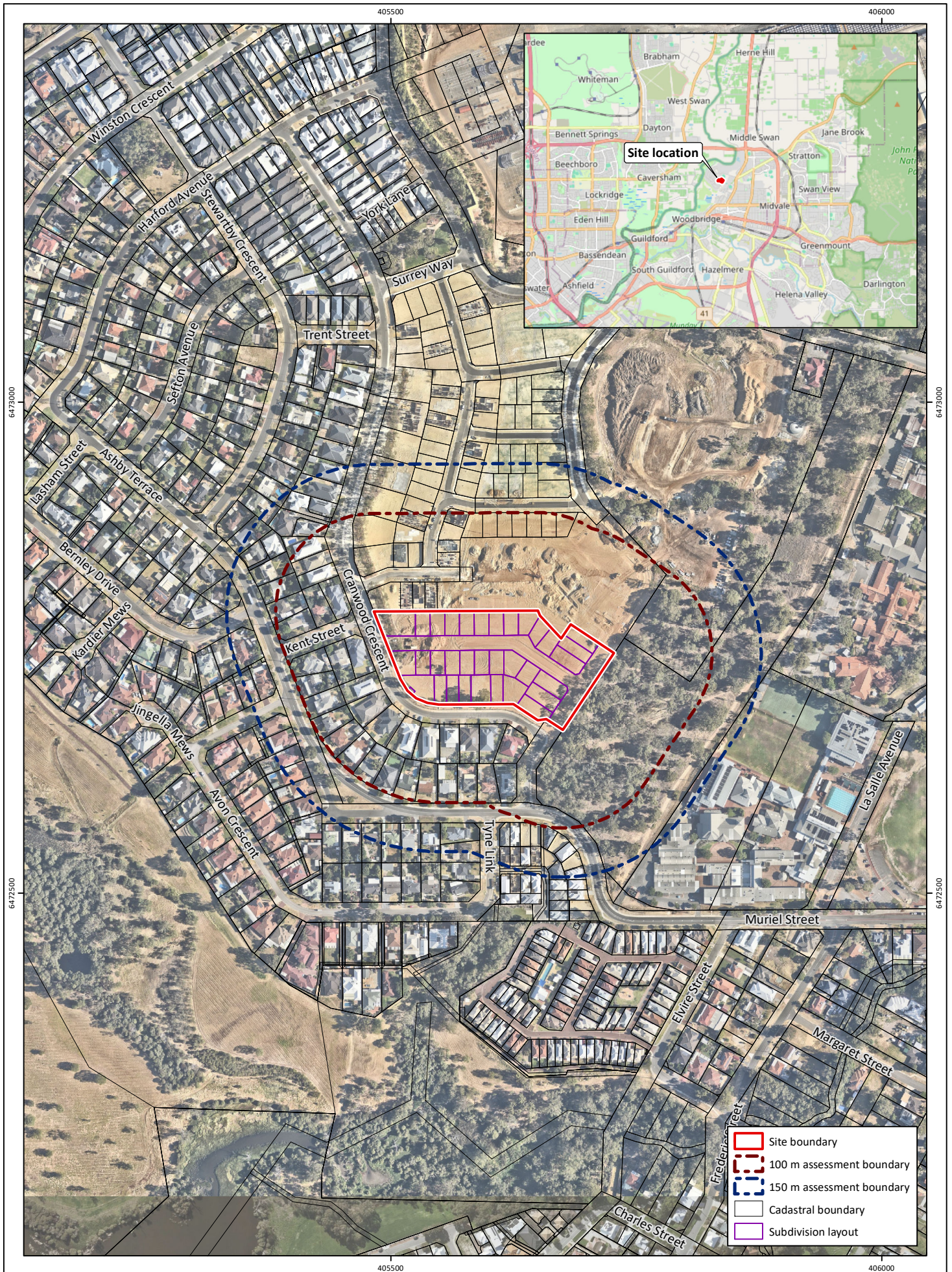


Figure 1: Site Location

Project: Bushfire Attack Level Assessment
Linc Midland Brick Development Support - Area 3 Stage 5B

Client: Hesperia Pty Ltd

Plan Number: EP19-105(67)--F457
Drawn: LAM
Date: 11/03/2026
Checked: PPS
Approved: AJR
Date: 25/03/2026



0 50 100
Metres
Scale: 1:5,000@A4
GDA 1994 MGA Zone 50



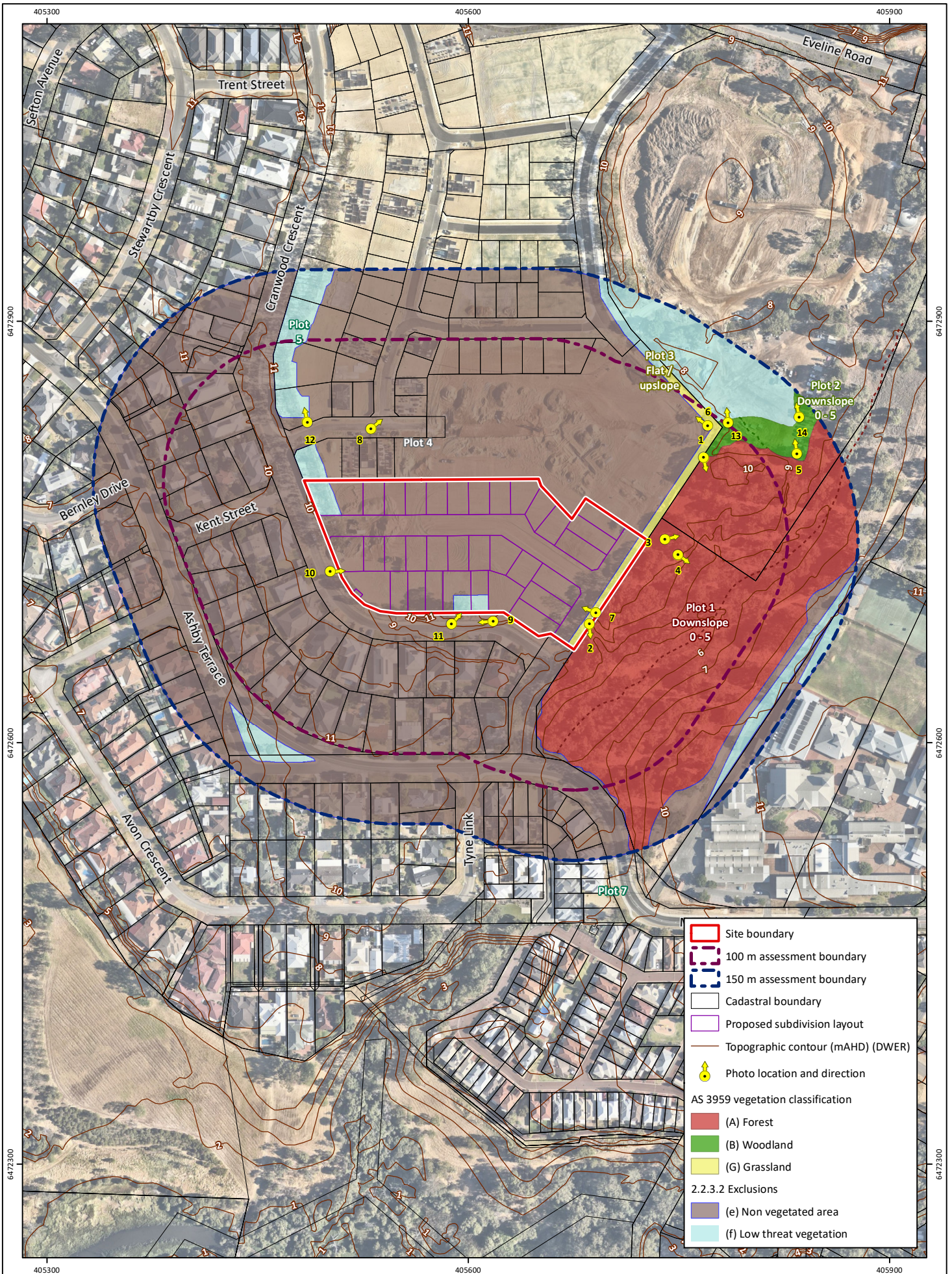


Figure 2: AS 3959 Vegetation Classification and Effective Slope

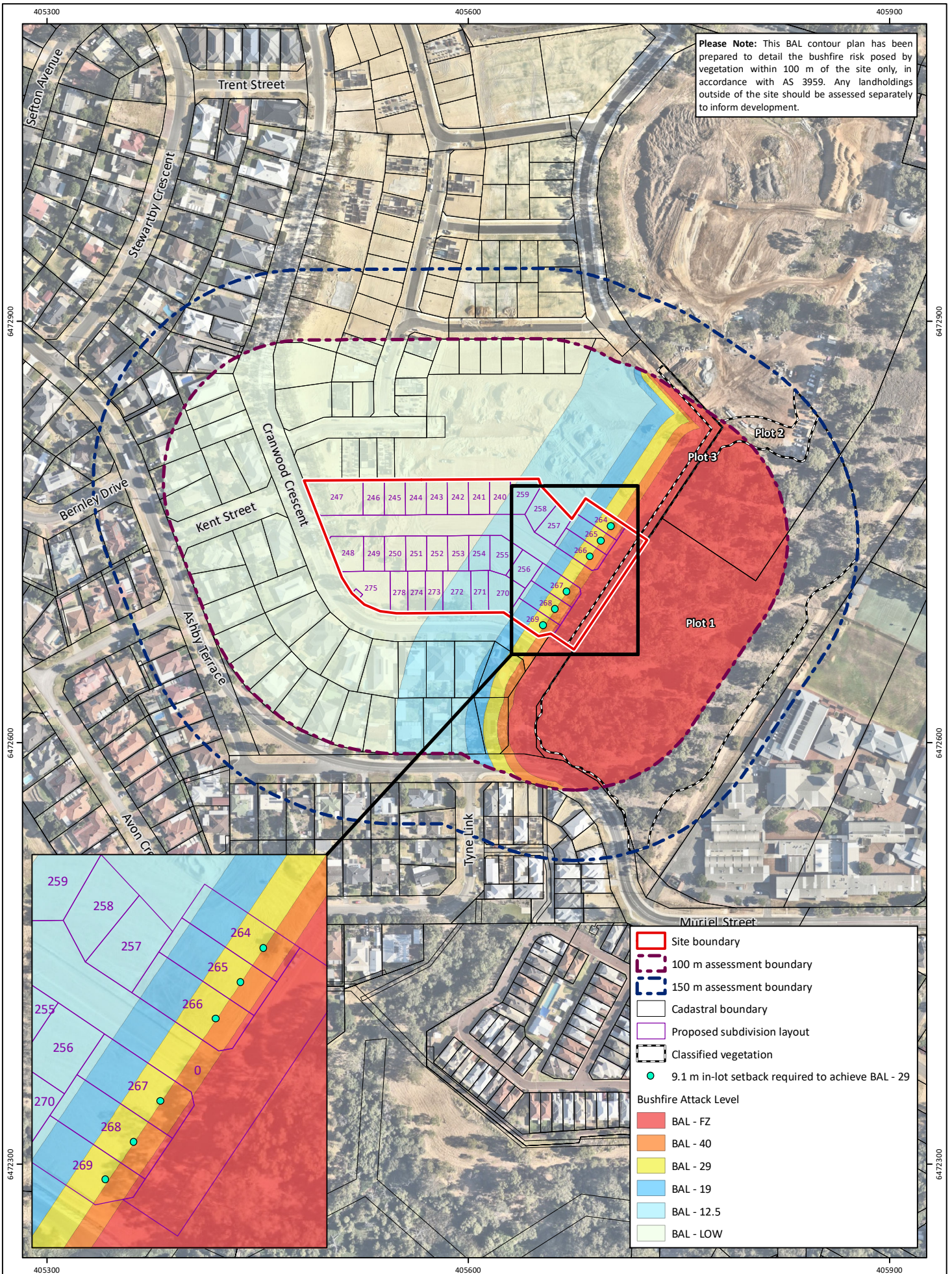
Project: Bushfire Attack Level Assessment
Linc Midland Brick Development Support - Area 3 Stage 5B
Client: Hesperia Pty Ltd

Plan Number: EP19-105(67)-F458
Drawn: LAM
Date: 12/03/2026
Checked: PPS
Approved: AJR
Date: 25/03/2026



0 50 100
Metres
Scale: 1:3,500@A4
GDA 1994 MGA Zone 50





Please Note: This BAL contour plan has been prepared to detail the bushfire risk posed by vegetation within 100 m of the site only, in accordance with AS 3959. Any landholdings outside of the site should be assessed separately to inform development.

Figure 3: Bushfire Attack Level Contour Plan

Project: Bushfire Attack Level Assessment
Linc Midland Brick Development Support - Area 3 Stage 5B

Client: Hesperia Pty Ltd

Plan Number: EP19-105(67)--F459
Drawn: LAM
Date: 12/03/2026
Checked: PPS
Approved: AJR
Date: 25/03/2026

Scale: 1:3,500@A4
GDA 1994 MGA Zone 50



While Emmerge Associates makes every attempt to ensure the accuracy and completeness of data, Emmerge accepts no responsibility for externally sourced data used.
© Landgate (2025). Nearmap Imagery date: 31/01/2026

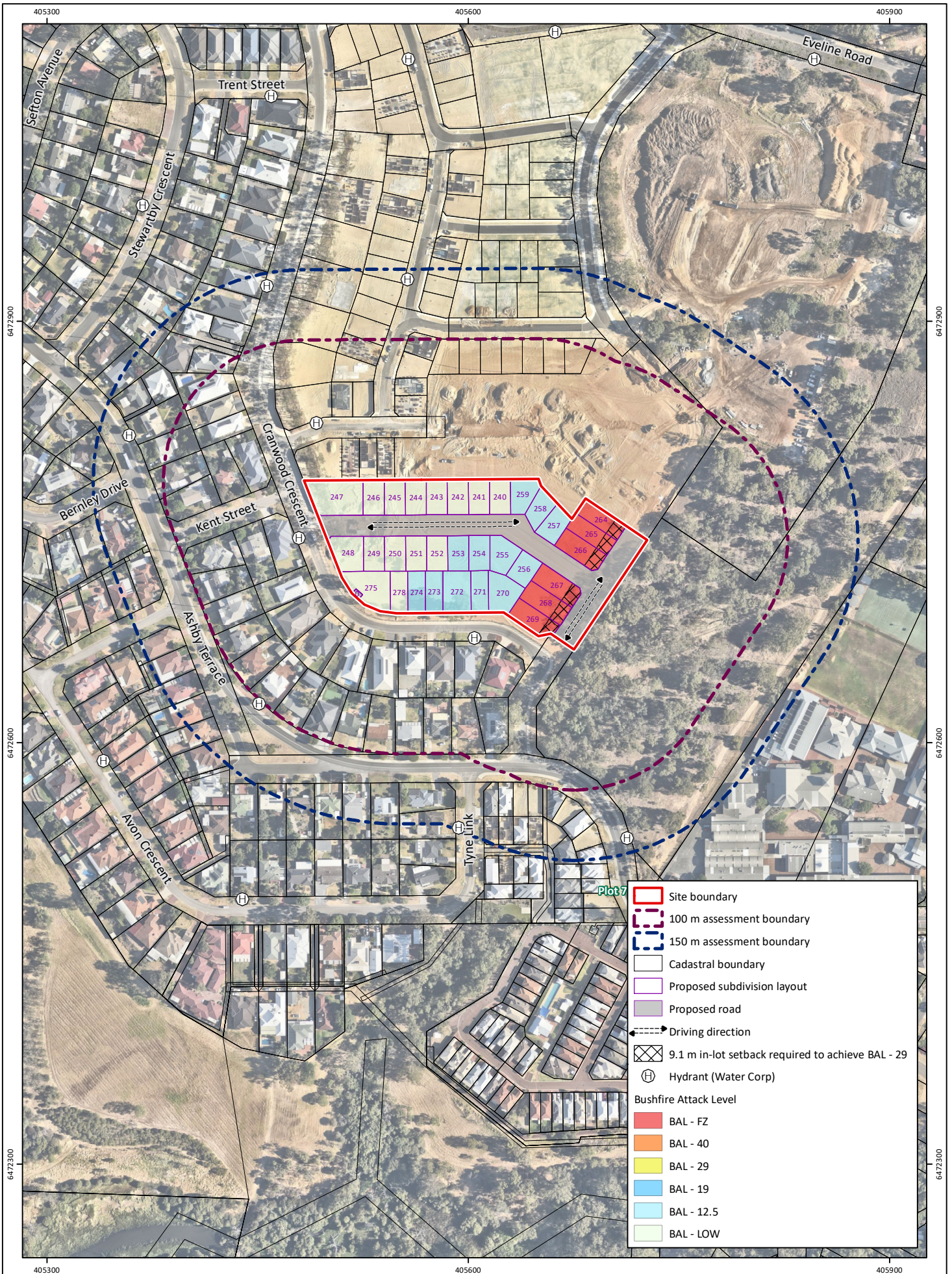


Figure 4: Bushfire Attack Level for Individual Lots

Plan Number:
EP19-105(67)--F460
Drawn:
LAM
Date:
12/03/2026
Checked:
PPS
Approved:
AJR
Date:
25/03/2026



0 50 100
Metres
Scale: 1:3,500@A4
GDA 1994 MGA Zone 50

Project: Bushfire Attack Level Assessment
Linc Midland Brick Development Support - Area 3 Stage 5B
Client: Hesperia Pty Ltd



Appendix A

BAL Assessment Certificate

Bushfire Attack Level Assessment

Rivermark Area 3 - Stage 5B



BUSHFIRE ATTACK LEVEL (BAL) CERTIFICATE

Determined in accordance with Australian Standard (AS) 3959-2018 Construction of buildings in bushfire prone areas

Site details

Address	Rivermark Viveash Area 3 Stage 5B – Lots 240-259, 264-275, 278, (Deposited Plan 431728)		
Suburb	Viveash	State	WA
Local government area	City of Swan		
Date of assessment	24 February 2026	Date of report	25 March 2026
Project no.	EP19-105(67)	Document no.	EP19-105(66)—163 CNV

Highest Bushfire Attack Level (BAL) at lot

Lot number	Classified vegetation and plot number	Distance of lot boundary from vegetation	Effective slope	Building BAL rating (see Figure 4)	Exceptions/notes for building BAL rating
240	Plot 1 Class (A) Forest	91 m	0-5 Downslope	BAL-12.5	N/A
241	No classified vegetation identified within 100 m.	>100 m	Not applicable	BAL-LOW	N/A
242	No classified vegetation identified within 100 m.	>100 m	Not applicable	BAL-LOW	N/A
243	No classified vegetation identified within 100 m.	>100 m	Not applicable	BAL-LOW	N/A
244	No classified vegetation identified within 100 m.	>100 m	Not applicable	BAL-LOW	N/A
245	No classified vegetation identified within 100 m.	>100 m	Not applicable	BAL-LOW	N/A
246	No classified vegetation identified within 100 m.	>100 m	Not applicable	BAL-LOW	N/A
247	No classified vegetation identified within 100 m.	>100 m	Not applicable	BAL-LOW	N/A
248	No classified vegetation identified within 100 m.	>100 m	Not applicable	BAL-LOW	N/A
249	No classified vegetation identified within 100 m.	>100 m	Not applicable	BAL-LOW	N/A
250	No classified vegetation identified within 100 m.	>100 m	Not applicable	BAL-LOW	N/A
251	No classified vegetation identified within 100 m.	>100 m	Not applicable	BAL-LOW	N/A
252	No classified vegetation identified within 100 m.	>100 m	Not applicable	BAL-LOW	N/A
253	Plot 1 Class A Forest	93 m	0-5 Downslope	BAL-12.5	N/A
254	Plot 1 Class A Forest	81 m	0-5 Downslope	BAL-12.5	N/A

Bushfire Attack Level Assessment

Rivermark Area 3 - Stage 5B



Highest Bushfire Attack Level (BAL) at lot					
Lot number	Classified vegetation and plot number	Distance of lot boundary from vegetation	Effective slope	Building BAL rating (see Figure 4)	Exceptions/notes for building BAL rating
255	Plot 1 Class A Forest	70 m	0-5 Downslope	BAL-12.5	N/A
256	Plot 1 Class A Forest	53 m	0-5 Downslope	BAL-12.5	N/A
257	Plot 1 Class A Forest	53 m	0-5 Downslope	BAL-12.5	N/A
258	Plot 1 Class A Forest	67 m	0-5 Downslope	BAL-12.5	N/A
259	Plot 1 Class A Forest	83 m	0-5 Downslope	BAL-12.5	N/A
264	Plot 1 Class A Forest	18 m	0-5 Downslope	BAL-FZ	9.1 m in-lot setback required to achieve BAL - 29
265	Plot 1 Class A Forest	18 m	0-5 Downslope	BAL-FZ	9.1 m in-lot setback required to achieve BAL - 29
266	Plot 1 Class A Forest	18 m	0-5 Downslope	BAL-FZ	9.1 m in-lot setback required to achieve BAL - 29
267	Plot 1 Class A Forest	18 m	0-5 Downslope	BAL-FZ	9.1 m in-lot setback required to achieve BAL - 29
268	Plot 1 Class A Forest	18 m	0-5 Downslope	BAL-FZ	9.1 m in-lot setback required to achieve BAL - 29
269	Plot 1 Class A Forest	18 m	0-5 Downslope	BAL-FZ	9.1 m in-lot setback required to achieve BAL - 29
270	Plot 1 Class A Forest	53 m	0-5 Downslope	BAL-12.5	N/A
271	Plot 1 Class A Forest	65 m	0-5 Downslope	BAL-12.5	N/A
272	Plot 1 Class A Forest	75 m	0-5 Downslope	BAL-12.5	N/A
273	Plot 1 Class A Forest	92 m	0-5 Downslope	BAL-12.5	N/A
274	No classified vegetation identified within 100 m.	>100 m	Not applicable	BAL-LOW	N/A
275	No classified vegetation identified within 100 m.	>100 m	Not applicable	BAL-LOW	N/A
278	No classified vegetation identified within 100 m.	>100 m	Not applicable	BAL-LOW	N/A

Individual BAL Certificates



Bushfire Attack Level Assessment

Rivermark Area 3 – Stage 5A



Bushfire Attack Level (BAL) Certificate

Determined in accordance with AS 3959-2018

This Certificate has been issued by a person accredited by Fire Protection Association Australia under the Bushfire Planning and Design (BPAD) Accreditation Scheme. The certificate details the conclusions of the full Bushfire Attack Level Assessment Report (full report) prepared by the Accredited Practitioner.


Property Details and Description of Works

Address Details	Unit no	Street no	Lot no 240	Street name / Plan Reference Deposited Plan 431728	
	Suburb Viveash			State WA	Postcode 6056
Local government area	City of Swan				
Main BCA class of the building	N/A	Use(s) of the building		N/A	
Description of the building or works	Single lot				

Determination of Highest Bushfire Attack Level

AS 3959 Assessment Procedure	Vegetation Classification	Effective Slope	Separation Distance	BAL
Method 1	Class A - Forest	0-5 Downslope	91 m	BAL – 12.5

BPAD Accredited Practitioner Details

Name Anthony Rowe (36690)	I hereby declare that I am a BPAD accredited bushfire practitioner.
Company Details Emerge Associates	
I hereby certify that I have undertaken the assessment of the above site and determined the Bushfire Attack Level stated above in accordance with the requirements of AS 3959-2018	Signature:  Date: 25 March 2026



Reliance on the assessment and determination of the Bushfire Attack Level contained in this certificate should not extend beyond a period of 12 months from the date of issue of the certificate. If this certificate was issued more than 12 months ago, it is recommended that the validity of the determination be confirmed with the Accredited Practitioner and where required an updated certificate issued.

Bushfire Attack Level Assessment

Rivermark Area 3 – Stage 5A Rivermark Area 3 – Stage 5A



Bushfire Attack Level (BAL) Certificate

Determined in accordance with AS 3959-2018

This Certificate has been issued by a person accredited by Fire Protection Association Australia under the Bushfire Planning and Design (BPAD) Accreditation Scheme. The certificate details the conclusions of the full Bushfire Attack Level Assessment Report (full report) prepared by the Accredited Practitioner.


Property Details and Description of Works

Address Details	Unit no	Street no	Lot no 241	Street name / Plan Reference Deposited Plan 431728	
	Suburb Viveash			State WA	Postcode 6056
Local government area	City of Swan				
Main BCA class of the building	N/A	Use(s) of the building	N/A		
Description of the building or works	Single lot				

Determination of Highest Bushfire Attack Level

AS 3959 Assessment Procedure	Vegetation Classification	Effective Slope	Separation Distance	BAL
Method 1	Excludable – Clause 2.2.3.2(e)	N/A	>100 m	BAL – LOW

BPAD Accredited Practitioner Details

Name Anthony Rowe (36690)	I hereby declare that I am a BPAD accredited bushfire practitioner. Signature:  Date: 25 March 2026
Company Details Emerge Associates	
I hereby certify that I have undertaken the assessment of the above site and determined the Bushfire Attack Level stated above in accordance with the requirements of AS 3959-2018	



Reliance on the assessment and determination of the Bushfire Attack Level contained in this certificate should not extend beyond a period of 12 months from the date of issue of the certificate. If this certificate was issued more than 12 months ago, it is recommended that the validity of the determination be confirmed with the Accredited Practitioner and where required an updated certificate issued.

Bushfire Attack Level Assessment

Rivermark Area 3 – Stage 5A Rivermark Area 3 – Stage 5A



Bushfire Attack Level (BAL) Certificate

Determined in accordance with AS 3959-2018

This Certificate has been issued by a person accredited by Fire Protection Association Australia under the Bushfire Planning and Design (BPAD) Accreditation Scheme. The certificate details the conclusions of the full Bushfire Attack Level Assessment Report (full report) prepared by the Accredited Practitioner.

Property Details and Description of Works

Address Details	Unit no	Street no	Lot no 242	Street name / Plan Reference Deposited Plan 431728	
	Suburb Viveash			State WA	Postcode 6056
Local government area	City of Swan				
Main BCA class of the building	N/A	Use(s) of the building	N/A		
Description of the building or works	Single lot				

Determination of Highest Bushfire Attack Level

AS 3959 Assessment Procedure	Vegetation Classification	Effective Slope	Separation Distance	BAL
Method 1	Excludable – Clause 2.2.3.2(e)	N/A	>100 m	BAL – LOW

BPAD Accredited Practitioner Details

Name Anthony Rowe (36690)	<p>I hereby declare that I am a BPAD accredited bushfire practitioner.</p> <p>Signature: </p> <p>Date: 25 March 2026</p>
Company Details Emerge Associates	
<p>I hereby certify that I have undertaken the assessment of the above site and determined the Bushfire Attack Level stated above in accordance with the requirements of AS 3959-2018</p>	



Reliance on the assessment and determination of the Bushfire Attack Level contained in this certificate should not extend beyond a period of 12 months from the date of issue of the certificate. If this certificate was issued more than 12 months ago, it is recommended that the validity of the determination be confirmed with the Accredited Practitioner and where required an updated certificate issued.

Bushfire Attack Level Assessment

Rivermark Area 3 – Stage 5A Rivermark Area 3 – Stage 5A



Bushfire Attack Level (BAL) Certificate

Determined in accordance with AS 3959-2018

This Certificate has been issued by a person accredited by Fire Protection Association Australia under the Bushfire Planning and Design (BPAD) Accreditation Scheme. The certificate details the conclusions of the full Bushfire Attack Level Assessment Report (full report) prepared by the Accredited Practitioner.


Property Details and Description of Works

Address Details	Unit no	Street no	Lot no 243	Street name / Plan Reference Deposited Plan 431728	
	Suburb Viveash			State WA	Postcode 6056
Local government area	City of Swan				
Main BCA class of the building	N/A	Use(s) of the building		N/A	
Description of the building or works	Single lot				

Determination of Highest Bushfire Attack Level

AS 3959 Assessment Procedure	Vegetation Classification	Effective Slope	Separation Distance	BAL
Method 1	Excludable – Clause 2.2.3.2(e)	N/A	>100 m	BAL – LOW

BPAD Accredited Practitioner Details

Name Anthony Rowe (36690)	I hereby declare that I am a BPAD accredited bushfire practitioner. Signature:  Date: 25 March 2026
Company Details Emerge Associates	
I hereby certify that I have undertaken the assessment of the above site and determined the Bushfire Attack Level stated above in accordance with the requirements of AS 3959-2018	



Reliance on the assessment and determination of the Bushfire Attack Level contained in this certificate should not extend beyond a period of 12 months from the date of issue of the certificate. If this certificate was issued more than 12 months ago, it is recommended that the validity of the determination be confirmed with the Accredited Practitioner and where required an updated certificate issued.

Bushfire Attack Level Assessment

Rivermark Area 3 – Stage 5A Rivermark Area 3 – Stage 5A



Bushfire Attack Level (BAL) Certificate

Determined in accordance with AS 3959-2018

This Certificate has been issued by a person accredited by Fire Protection Association Australia under the Bushfire Planning and Design (BPAD) Accreditation Scheme. The certificate details the conclusions of the full Bushfire Attack Level Assessment Report (full report) prepared by the Accredited Practitioner.


Property Details and Description of Works

Address Details	Unit no	Street no	Lot no 244	Street name / Plan Reference Deposited Plan 431728	
	Suburb Viveash			State WA	Postcode 6056
Local government area	City of Swan				
Main BCA class of the building	N/A	Use(s) of the building	N/A		
Description of the building or works	Single lot				

Determination of Highest Bushfire Attack Level

AS 3959 Assessment Procedure	Vegetation Classification	Effective Slope	Separation Distance	BAL
Method 1	Excludable – Clause 2.2.3.2(e)	N/A	>100 m	BAL – LOW

BPAD Accredited Practitioner Details

Name Anthony Rowe (36690)	I hereby declare that I am a BPAD accredited bushfire practitioner. Signature:  Date: 25 March 2026
Company Details Emerge Associates	
I hereby certify that I have undertaken the assessment of the above site and determined the Bushfire Attack Level stated above in accordance with the requirements of AS 3959-2018	



Reliance on the assessment and determination of the Bushfire Attack Level contained in this certificate should not extend beyond a period of 12 months from the date of issue of the certificate. If this certificate was issued more than 12 months ago, it is recommended that the validity of the determination be confirmed with the Accredited Practitioner and where required an updated certificate issued.

Bushfire Attack Level Assessment

Rivermark Area 3 – Stage 5A Rivermark Area 3 – Stage 5A



Bushfire Attack Level (BAL) Certificate

Determined in accordance with AS 3959-2018

This Certificate has been issued by a person accredited by Fire Protection Association Australia under the Bushfire Planning and Design (BPAD) Accreditation Scheme. The certificate details the conclusions of the full Bushfire Attack Level Assessment Report (full report) prepared by the Accredited Practitioner.



Property Details and Description of Works

Address Details	Unit no	Street no	Lot no 245	Street name / Plan Reference Deposited Plan 431728	
	Suburb Viveash			State WA	Postcode 6056
Local government area	City of Swan				
Main BCA class of the building	N/A	Use(s) of the building	N/A		
Description of the building or works	Single lot				

Determination of Highest Bushfire Attack Level

AS 3959 Assessment Procedure	Vegetation Classification	Effective Slope	Separation Distance	BAL
Method 1	Excludable – Clause 2.2.3.2(e)	N/A	>100 m	BAL – LOW

BPAD Accredited Practitioner Details

Name Anthony Rowe (36690)	I hereby declare that I am a BPAD accredited bushfire practitioner.
Company Details Emerge Associates	
I hereby certify that I have undertaken the assessment of the above site and determined the Bushfire Attack Level stated above in accordance with the requirements of AS 3959-2018	Signature:   Date: 25 March 2026

Reliance on the assessment and determination of the Bushfire Attack Level contained in this certificate should not extend beyond a period of 12 months from the date of issue of the certificate. If this certificate was issued more than 12 months ago, it is recommended that the validity of the determination be confirmed with the Accredited Practitioner and where required an updated certificate issued.

Bushfire Attack Level Assessment

Rivermark Area 3 – Stage 5A Rivermark Area 3 – Stage 5A



Bushfire Attack Level (BAL) Certificate

Determined in accordance with AS 3959-2018

This Certificate has been issued by a person accredited by Fire Protection Association Australia under the Bushfire Planning and Design (BPAD) Accreditation Scheme. The certificate details the conclusions of the full Bushfire Attack Level Assessment Report (full report) prepared by the Accredited Practitioner.


Property Details and Description of Works

Address Details	Unit no	Street no	Lot no 246	Street name / Plan Reference Deposited Plan 431728	
	Suburb Viveash			State WA	Postcode 6056
Local government area	City of Swan				
Main BCA class of the building	N/A	Use(s) of the building	N/A		
Description of the building or works	Single lot				

Determination of Highest Bushfire Attack Level

AS 3959 Assessment Procedure	Vegetation Classification	Effective Slope	Separation Distance	BAL
Method 1	Excludable – Clause 2.2.3.2(e)	N/A	>100 m	BAL – LOW

BPAD Accredited Practitioner Details

Name Anthony Rowe (36690)	I hereby declare that I am a BPAD accredited bushfire practitioner. Signature:  Date: 25 March 2026
Company Details Emerge Associates	
I hereby certify that I have undertaken the assessment of the above site and determined the Bushfire Attack Level stated above in accordance with the requirements of AS 3959-2018	



Reliance on the assessment and determination of the Bushfire Attack Level contained in this certificate should not extend beyond a period of 12 months from the date of issue of the certificate. If this certificate was issued more than 12 months ago, it is recommended that the validity of the determination be confirmed with the Accredited Practitioner and where required an updated certificate issued.

Bushfire Attack Level Assessment

Rivermark Area 3 – Stage 5A Rivermark Area 3 – Stage 5A



Bushfire Attack Level (BAL) Certificate

Determined in accordance with AS 3959-2018

This Certificate has been issued by a person accredited by Fire Protection Association Australia under the Bushfire Planning and Design (BPAD) Accreditation Scheme. The certificate details the conclusions of the full Bushfire Attack Level Assessment Report (full report) prepared by the Accredited Practitioner.


Property Details and Description of Works

Address Details	Unit no	Street no	Lot no 247	Street name / Plan Reference Deposited Plan 431728	
	Suburb Viveash			State WA	Postcode 6056
Local government area	City of Swan				
Main BCA class of the building	N/A	Use(s) of the building		N/A	
Description of the building or works	Single lot				

Determination of Highest Bushfire Attack Level

AS 3959 Assessment Procedure	Vegetation Classification	Effective Slope	Separation Distance	BAL
Method 1	Excludable – Clause 2.2.3.2(e)	N/A	>100 m	BAL – LOW

BPAD Accredited Practitioner Details

Name Anthony Rowe (36690)	I hereby declare that I am a BPAD accredited bushfire practitioner. Signature:  Date: 25 March 2026
Company Details Emerge Associates	
I hereby certify that I have undertaken the assessment of the above site and determined the Bushfire Attack Level stated above in accordance with the requirements of AS 3959-2018	



Reliance on the assessment and determination of the Bushfire Attack Level contained in this certificate should not extend beyond a period of 12 months from the date of issue of the certificate. If this certificate was issued more than 12 months ago, it is recommended that the validity of the determination be confirmed with the Accredited Practitioner and where required an updated certificate issued.

Bushfire Attack Level Assessment

Rivermark Area 3 – Stage 5A Rivermark Area 3 – Stage 5A



Bushfire Attack Level (BAL) Certificate

Determined in accordance with AS 3959-2018

This Certificate has been issued by a person accredited by Fire Protection Association Australia under the Bushfire Planning and Design (BPAD) Accreditation Scheme. The certificate details the conclusions of the full Bushfire Attack Level Assessment Report (full report) prepared by the Accredited Practitioner.


Property Details and Description of Works

Address Details	Unit no	Street no	Lot no 248	Street name / Plan Reference Deposited Plan 431728	
	Suburb Viveash			State WA	Postcode 6056
Local government area	City of Swan				
Main BCA class of the building	N/A	Use(s) of the building	N/A		
Description of the building or works	Single lot				

Determination of Highest Bushfire Attack Level

AS 3959 Assessment Procedure	Vegetation Classification	Effective Slope	Separation Distance	BAL
Method 1	Excludable – Clause 2.2.3.2(e)	N/A	>100 m	BAL – LOW

BPAD Accredited Practitioner Details

Name Anthony Rowe (36690)	I hereby declare that I am a BPAD accredited bushfire practitioner. Signature:  Date: 25 March 2026
Company Details Emerge Associates	
I hereby certify that I have undertaken the assessment of the above site and determined the Bushfire Attack Level stated above in accordance with the requirements of AS 3959-2018	



Reliance on the assessment and determination of the Bushfire Attack Level contained in this certificate should not extend beyond a period of 12 months from the date of issue of the certificate. If this certificate was issued more than 12 months ago, it is recommended that the validity of the determination be confirmed with the Accredited Practitioner and where required an updated certificate issued.

Bushfire Attack Level Assessment

Rivermark Area 3 – Stage 5A Rivermark Area 3 – Stage 5A



Bushfire Attack Level (BAL) Certificate

Determined in accordance with AS 3959-2018

This Certificate has been issued by a person accredited by Fire Protection Association Australia under the Bushfire Planning and Design (BPAD) Accreditation Scheme. The certificate details the conclusions of the full Bushfire Attack Level Assessment Report (full report) prepared by the Accredited Practitioner.

Property Details and Description of Works

Address Details	Unit no	Street no	Lot no 249	Street name / Plan Reference Deposited Plan 431728	
	Suburb Viveash			State WA	Postcode 6056
Local government area	City of Swan				
Main BCA class of the building	N/A	Use(s) of the building	N/A		
Description of the building or works	Single lot				

Determination of Highest Bushfire Attack Level

AS 3959 Assessment Procedure	Vegetation Classification	Effective Slope	Separation Distance	BAL
Method 1	Excludable – Clause 2.2.3.2(e)	N/A	>100 m	BAL – LOW

BPAD Accredited Practitioner Details

Name Anthony Rowe (36690)	I hereby declare that I am a BPAD accredited bushfire practitioner. Signature:  Date: 25 March 2026
Company Details Emerge Associates	
I hereby certify that I have undertaken the assessment of the above site and determined the Bushfire Attack Level stated above in accordance with the requirements of AS 3959-2018	



Reliance on the assessment and determination of the Bushfire Attack Level contained in this certificate should not extend beyond a period of 12 months from the date of issue of the certificate. If this certificate was issued more than 12 months ago, it is recommended that the validity of the determination be confirmed with the Accredited Practitioner and where required an updated certificate issued.

Bushfire Attack Level Assessment

Rivermark Area 3 – Stage 5A Rivermark Area 3 – Stage 5A



Bushfire Attack Level (BAL) Certificate

Determined in accordance with AS 3959-2018

This Certificate has been issued by a person accredited by Fire Protection Association Australia under the Bushfire Planning and Design (BPAD) Accreditation Scheme. The certificate details the conclusions of the full Bushfire Attack Level Assessment Report (full report) prepared by the Accredited Practitioner.



Property Details and Description of Works

Address Details	Unit no	Street no	Lot no 250	Street name / Plan Reference Deposited Plan 431728	
	Suburb Viveash			State WA	Postcode 6056
Local government area	City of Swan				
Main BCA class of the building	N/A	Use(s) of the building	N/A		
Description of the building or works	Single lot				

Determination of Highest Bushfire Attack Level

AS 3959 Assessment Procedure	Vegetation Classification	Effective Slope	Separation Distance	BAL
Method 1	Excludable – Clause 2.2.3.2(e)	N/A	>100 m	BAL – LOW

BPAD Accredited Practitioner Details

Name Anthony Rowe (36690)	I hereby declare that I am a BPAD accredited bushfire practitioner.
Company Details Emerge Associates	
I hereby certify that I have undertaken the assessment of the above site and determined the Bushfire Attack Level stated above in accordance with the requirements of AS 3959-2018	Signature:   Date: 25 March 2026

Reliance on the assessment and determination of the Bushfire Attack Level contained in this certificate should not extend beyond a period of 12 months from the date of issue of the certificate. If this certificate was issued more than 12 months ago, it is recommended that the validity of the determination be confirmed with the Accredited Practitioner and where required an updated certificate issued.

Bushfire Attack Level Assessment

Rivermark Area 3 – Stage 5A Rivermark Area 3 – Stage 5A



Bushfire Attack Level (BAL) Certificate

Determined in accordance with AS 3959-2018

This Certificate has been issued by a person accredited by Fire Protection Association Australia under the Bushfire Planning and Design (BPAD) Accreditation Scheme. The certificate details the conclusions of the full Bushfire Attack Level Assessment Report (full report) prepared by the Accredited Practitioner.


Property Details and Description of Works

Address Details	Unit no	Street no	Lot no 251	Street name / Plan Reference Deposited Plan 431728	
	Suburb Viveash			State WA	Postcode 6056
Local government area	City of Swan				
Main BCA class of the building	N/A	Use(s) of the building	N/A		
Description of the building or works	Single lot				

Determination of Highest Bushfire Attack Level

AS 3959 Assessment Procedure	Vegetation Classification	Effective Slope	Separation Distance	BAL
Method 1	Excludable – Clause 2.2.3.2(e)	N/A	>100 m	BAL – LOW

BPAD Accredited Practitioner Details

Name Anthony Rowe (36690)	I hereby declare that I am a BPAD accredited bushfire practitioner. Signature:  Date: 25 March 2026
Company Details Emerge Associates	
I hereby certify that I have undertaken the assessment of the above site and determined the Bushfire Attack Level stated above in accordance with the requirements of AS 3959-2018	



Reliance on the assessment and determination of the Bushfire Attack Level contained in this certificate should not extend beyond a period of 12 months from the date of issue of the certificate. If this certificate was issued more than 12 months ago, it is recommended that the validity of the determination be confirmed with the Accredited Practitioner and where required an updated certificate issued.

Bushfire Attack Level Assessment

Rivermark Area 3 – Stage 5A Rivermark Area 3 – Stage 5A



Bushfire Attack Level (BAL) Certificate

Determined in accordance with AS 3959-2018

This Certificate has been issued by a person accredited by Fire Protection Association Australia under the Bushfire Planning and Design (BPAD) Accreditation Scheme. The certificate details the conclusions of the full Bushfire Attack Level Assessment Report (full report) prepared by the Accredited Practitioner.


Property Details and Description of Works

Address Details	Unit no	Street no	Lot no 252	Street name / Plan Reference Deposited Plan 431728	
	Suburb Viveash			State WA	Postcode 6056
Local government area	City of Swan				
Main BCA class of the building	N/A	Use(s) of the building	N/A		
Description of the building or works	Single lot				

Determination of Highest Bushfire Attack Level

AS 3959 Assessment Procedure	Vegetation Classification	Effective Slope	Separation Distance	BAL
Method 1	Excludable – Clause 2.2.3.2(e)	N/A	>100 m	BAL – LOW

BPAD Accredited Practitioner Details

Name Anthony Rowe (36690)	I hereby declare that I am a BPAD accredited bushfire practitioner. Signature:  Date: 25 March 2026
Company Details Emerge Associates	
I hereby certify that I have undertaken the assessment of the above site and determined the Bushfire Attack Level stated above in accordance with the requirements of AS 3959-2018	



Reliance on the assessment and determination of the Bushfire Attack Level contained in this certificate should not extend beyond a period of 12 months from the date of issue of the certificate. If this certificate was issued more than 12 months ago, it is recommended that the validity of the determination be confirmed with the Accredited Practitioner and where required an updated certificate issued.

Bushfire Attack Level Assessment

Rivermark Area 3 – Stage 5A Rivermark Area 3 – Stage 5A



Bushfire Attack Level (BAL) Certificate

Determined in accordance with AS 3959-2018

This Certificate has been issued by a person accredited by Fire Protection Association Australia under the Bushfire Planning and Design (BPAD) Accreditation Scheme. The certificate details the conclusions of the full Bushfire Attack Level Assessment Report (full report) prepared by the Accredited Practitioner.



Property Details and Description of Works

Address Details	Unit no	Street no	Lot no 253	Street name / Plan Reference Deposited Plan 431728	
	Suburb Viveash			State WA	Postcode 6056
Local government area	City of Swan				
Main BCA class of the building	N/A	Use(s) of the building	N/A		
Description of the building or works	Single lot				

Determination of Highest Bushfire Attack Level

AS 3959 Assessment Procedure	Vegetation Classification	Effective Slope	Separation Distance	BAL
Method 1	Class A - Forest	0-5 Downslope	93 m	BAL – 12.5

BPAD Accredited Practitioner Details

Name Anthony Rowe (36690)	I hereby declare that I am a BPAD accredited bushfire practitioner.
Company Details Emerge Associates	
I hereby certify that I have undertaken the assessment of the above site and determined the Bushfire Attack Level stated above in accordance with the requirements of AS 3959-2018	Signature:   Date: 25 March 2026

Reliance on the assessment and determination of the Bushfire Attack Level contained in this certificate should not extend beyond a period of 12 months from the date of issue of the certificate. If this certificate was issued more than 12 months ago, it is recommended that the validity of the determination be confirmed with the Accredited Practitioner and where required an updated certificate issued.

Bushfire Attack Level Assessment

Rivermark Area 3 – Stage 5A Rivermark Area 3 – Stage 5A



Bushfire Attack Level (BAL) Certificate

Determined in accordance with AS 3959-2018

This Certificate has been issued by a person accredited by Fire Protection Association Australia under the Bushfire Planning and Design (BPAD) Accreditation Scheme. The certificate details the conclusions of the full Bushfire Attack Level Assessment Report (full report) prepared by the Accredited Practitioner.


Property Details and Description of Works

Address Details	Unit no	Street no	Lot no 254	Street name / Plan Reference Deposited Plan 431728	
	Suburb Viveash			State WA	Postcode 6056
Local government area	City of Swan				
Main BCA class of the building	N/A	Use(s) of the building	N/A		
Description of the building or works	Single lot				

Determination of Highest Bushfire Attack Level

AS 3959 Assessment Procedure	Vegetation Classification	Effective Slope	Separation Distance	BAL
Method 1	Class A - Forest	0-5 Downslope	81 m	BAL – 12.5

BPAD Accredited Practitioner Details

Name Anthony Rowe (36690)	<p>I hereby declare that I am a BPAD accredited bushfire practitioner.</p> <p>Signature: </p> <p>Date: 25 March 2026</p>
Company Details Emerge Associates	
<p>I hereby certify that I have undertaken the assessment of the above site and determined the Bushfire Attack Level stated above in accordance with the requirements of AS 3959-2018</p>	



Reliance on the assessment and determination of the Bushfire Attack Level contained in this certificate should not extend beyond a period of 12 months from the date of issue of the certificate. If this certificate was issued more than 12 months ago, it is recommended that the validity of the determination be confirmed with the Accredited Practitioner and where required an updated certificate issued.

Bushfire Attack Level Assessment

Rivermark Area 3 – Stage 5A Rivermark Area 3 – Stage 5A



Bushfire Attack Level (BAL) Certificate

Determined in accordance with AS 3959-2018

This Certificate has been issued by a person accredited by Fire Protection Association Australia under the Bushfire Planning and Design (BPAD) Accreditation Scheme. The certificate details the conclusions of the full Bushfire Attack Level Assessment Report (full report) prepared by the Accredited Practitioner.



Property Details and Description of Works

Address Details	Unit no	Street no	Lot no 255	Street name / Plan Reference Deposited Plan 431728	
	Suburb Viveash			State WA	Postcode 6056
Local government area	City of Swan				
Main BCA class of the building	N/A	Use(s) of the building	N/A		
Description of the building or works	Single lot				

Determination of Highest Bushfire Attack Level

AS 3959 Assessment Procedure	Vegetation Classification	Effective Slope	Separation Distance	BAL
Method 1	Class A - Forest	0-5 Downslope	70 m	BAL – 12.5

BPAD Accredited Practitioner Details

Name Anthony Rowe (36690)	I hereby declare that I am a BPAD accredited bushfire practitioner.
Company Details Emerge Associates	
I hereby certify that I have undertaken the assessment of the above site and determined the Bushfire Attack Level stated above in accordance with the requirements of AS 3959-2018	Signature:   Date: 25 March 2026

Reliance on the assessment and determination of the Bushfire Attack Level contained in this certificate should not extend beyond a period of 12 months from the date of issue of the certificate. If this certificate was issued more than 12 months ago, it is recommended that the validity of the determination be confirmed with the Accredited Practitioner and where required an updated certificate issued.

Bushfire Attack Level Assessment

Rivermark Area 3 – Stage 5A Rivermark Area 3 – Stage 5A



Bushfire Attack Level (BAL) Certificate

Determined in accordance with AS 3959-2018

This Certificate has been issued by a person accredited by Fire Protection Association Australia under the Bushfire Planning and Design (BPAD) Accreditation Scheme. The certificate details the conclusions of the full Bushfire Attack Level Assessment Report (full report) prepared by the Accredited Practitioner.



Property Details and Description of Works

Address Details	Unit no	Street no	Lot no 256	Street name / Plan Reference Deposited Plan 431728	
	Suburb Viveash			State WA	Postcode 6056
Local government area	City of Swan				
Main BCA class of the building	N/A	Use(s) of the building	N/A		
Description of the building or works	Single lot				

Determination of Highest Bushfire Attack Level

AS 3959 Assessment Procedure	Vegetation Classification	Effective Slope	Separation Distance	BAL
Method 1	Class A - Forest	0-5 Downslope	53 m	BAL – 12.5

BPAD Accredited Practitioner Details

Name Anthony Rowe (36690)	I hereby declare that I am a BPAD accredited bushfire practitioner.
Company Details Emerge Associates	
I hereby certify that I have undertaken the assessment of the above site and determined the Bushfire Attack Level stated above in accordance with the requirements of AS 3959-2018	Signature:   Date: 25 March 2026

Reliance on the assessment and determination of the Bushfire Attack Level contained in this certificate should not extend beyond a period of 12 months from the date of issue of the certificate. If this certificate was issued more than 12 months ago, it is recommended that the validity of the determination be confirmed with the Accredited Practitioner and where required an updated certificate issued.

Bushfire Attack Level Assessment

Rivermark Area 3 – Stage 5A Rivermark Area 3 – Stage 5A



Bushfire Attack Level (BAL) Certificate

Determined in accordance with AS 3959-2018

This Certificate has been issued by a person accredited by Fire Protection Association Australia under the Bushfire Planning and Design (BPAD) Accreditation Scheme. The certificate details the conclusions of the full Bushfire Attack Level Assessment Report (full report) prepared by the Accredited Practitioner.



Property Details and Description of Works

Address Details	Unit no	Street no	Lot no 257	Street name / Plan Reference Deposited Plan 431728	
	Suburb Viveash			State WA	Postcode 6056
Local government area	City of Swan				
Main BCA class of the building	N/A	Use(s) of the building	N/A		
Description of the building or works	Single lot				

Determination of Highest Bushfire Attack Level

AS 3959 Assessment Procedure	Vegetation Classification	Effective Slope	Separation Distance	BAL
Method 1	Class A - Forest	0-5 Downslope	53 m	BAL – 12.5

BPAD Accredited Practitioner Details

Name Anthony Rowe (36690)	I hereby declare that I am a BPAD accredited bushfire practitioner.
Company Details Emerge Associates	
I hereby certify that I have undertaken the assessment of the above site and determined the Bushfire Attack Level stated above in accordance with the requirements of AS 3959-2018	Signature:   Date: 25 March 2026

Reliance on the assessment and determination of the Bushfire Attack Level contained in this certificate should not extend beyond a period of 12 months from the date of issue of the certificate. If this certificate was issued more than 12 months ago, it is recommended that the validity of the determination be confirmed with the Accredited Practitioner and where required an updated certificate issued.

Bushfire Attack Level Assessment

Rivermark Area 3 – Stage 5A Rivermark Area 3 – Stage 5A



Bushfire Attack Level (BAL) Certificate

Determined in accordance with AS 3959-2018

This Certificate has been issued by a person accredited by Fire Protection Association Australia under the Bushfire Planning and Design (BPAD) Accreditation Scheme. The certificate details the conclusions of the full Bushfire Attack Level Assessment Report (full report) prepared by the Accredited Practitioner.



Property Details and Description of Works

Address Details	Unit no	Street no	Lot no 258	Street name / Plan Reference Deposited Plan 431728	
	Suburb Viveash			State WA	Postcode 6056
Local government area	City of Swan				
Main BCA class of the building	N/A	Use(s) of the building	N/A		
Description of the building or works	Single lot				

Determination of Highest Bushfire Attack Level

AS 3959 Assessment Procedure	Vegetation Classification	Effective Slope	Separation Distance	BAL
Method 1	Class A - Forest	0-5 Downslope	67 m	BAL – 12.5

BPAD Accredited Practitioner Details

Name Anthony Rowe (36690)	I hereby declare that I am a BPAD accredited bushfire practitioner.
Company Details Emerge Associates	
I hereby certify that I have undertaken the assessment of the above site and determined the Bushfire Attack Level stated above in accordance with the requirements of AS 3959-2018	Signature:   Date: 25 March 2026

Reliance on the assessment and determination of the Bushfire Attack Level contained in this certificate should not extend beyond a period of 12 months from the date of issue of the certificate. If this certificate was issued more than 12 months ago, it is recommended that the validity of the determination be confirmed with the Accredited Practitioner and where required an updated certificate issued.

Bushfire Attack Level Assessment

Rivermark Area 3 – Stage 5A Rivermark Area 3 – Stage 5A



Bushfire Attack Level (BAL) Certificate

Determined in accordance with AS 3959-2018

This Certificate has been issued by a person accredited by Fire Protection Association Australia under the Bushfire Planning and Design (BPAD) Accreditation Scheme. The certificate details the conclusions of the full Bushfire Attack Level Assessment Report (full report) prepared by the Accredited Practitioner.



Property Details and Description of Works

Address Details	Unit no	Street no	Lot no 259	Street name / Plan Reference Deposited Plan 431728	
	Suburb Viveash			State WA	Postcode 6056
Local government area	City of Swan				
Main BCA class of the building	N/A	Use(s) of the building	N/A		
Description of the building or works	Single lot				

Determination of Highest Bushfire Attack Level

AS 3959 Assessment Procedure	Vegetation Classification	Effective Slope	Separation Distance	BAL
Method 1	Class A - Forest	0-5 Downslope	83 m	BAL – 12.5

BPAD Accredited Practitioner Details

Name Anthony Rowe (36690)	I hereby declare that I am a BPAD accredited bushfire practitioner.
Company Details Emerge Associates	
I hereby certify that I have undertaken the assessment of the above site and determined the Bushfire Attack Level stated above in accordance with the requirements of AS 3959-2018	Signature:   Date: 25 March 2026

Reliance on the assessment and determination of the Bushfire Attack Level contained in this certificate should not extend beyond a period of 12 months from the date of issue of the certificate. If this certificate was issued more than 12 months ago, it is recommended that the validity of the determination be confirmed with the Accredited Practitioner and where required an updated certificate issued.

Bushfire Attack Level Assessment

Rivermark Area 3 – Stage 5A Rivermark Area 3 – Stage 5A



Bushfire Attack Level (BAL) Certificate

Determined in accordance with AS 3959-2018

This Certificate has been issued by a person accredited by Fire Protection Association Australia under the Bushfire Planning and Design (BPAD) Accreditation Scheme. The certificate details the conclusions of the full Bushfire Attack Level Assessment Report (full report) prepared by the Accredited Practitioner.



Property Details and Description of Works

Address Details	Unit no	Street no	Lot no 264	Street name / Plan Reference Deposited Plan 431728	
	Suburb Viveash			State WA	Postcode 6056
Local government area	City of Swan				
Main BCA class of the building	N/A	Use(s) of the building	N/A		
Description of the building or works	Single lot				

Determination of Highest Bushfire Attack Level

AS 3959 Assessment Procedure	Vegetation Classification	Effective Slope	Separation Distance	BAL
Method 1	Class A - Forest	0-5 Downslope	18 m	BAL – FZ

BPAD Accredited Practitioner Details

Name Anthony Rowe (36690)	I hereby declare that I am a BPAD accredited bushfire practitioner.
Company Details Emerge Associates	
I hereby certify that I have undertaken the assessment of the above site and determined the Bushfire Attack Level stated above in accordance with the requirements of AS 3959-2018	Signature:   Date: 25 March 2026

Reliance on the assessment and determination of the Bushfire Attack Level contained in this certificate should not extend beyond a period of 12 months from the date of issue of the certificate. If this certificate was issued more than 12 months ago, it is recommended that the validity of the determination be confirmed with the Accredited Practitioner and where required an updated certificate issued.

Bushfire Attack Level Assessment

Rivermark Area 3 – Stage 5A Rivermark Area 3 – Stage 5A



Bushfire Attack Level (BAL) Certificate

Determined in accordance with AS 3959-2018

This Certificate has been issued by a person accredited by Fire Protection Association Australia under the Bushfire Planning and Design (BPAD) Accreditation Scheme. The certificate details the conclusions of the full Bushfire Attack Level Assessment Report (full report) prepared by the Accredited Practitioner.



Property Details and Description of Works

Address Details	Unit no	Street no	Lot no 265	Street name / Plan Reference Deposited Plan 431728	
	Suburb Viveash			State WA	Postcode 6056
Local government area	City of Swan				
Main BCA class of the building	N/A	Use(s) of the building	N/A		
Description of the building or works	Single lot				

Determination of Highest Bushfire Attack Level

AS 3959 Assessment Procedure	Vegetation Classification	Effective Slope	Separation Distance	BAL
Method 1	Class A - Forest	0-5 Downslope	18 m	BAL – FZ

BPAD Accredited Practitioner Details

Name Anthony Rowe (36690)	I hereby declare that I am a BPAD accredited bushfire practitioner.
Company Details Emerge Associates	
I hereby certify that I have undertaken the assessment of the above site and determined the Bushfire Attack Level stated above in accordance with the requirements of AS 3959-2018	Signature:   Date: 25 March 2026

Reliance on the assessment and determination of the Bushfire Attack Level contained in this certificate should not extend beyond a period of 12 months from the date of issue of the certificate. If this certificate was issued more than 12 months ago, it is recommended that the validity of the determination be confirmed with the Accredited Practitioner and where required an updated certificate issued.

Bushfire Attack Level Assessment

Rivermark Area 3 – Stage 5A Rivermark Area 3 – Stage 5A



Bushfire Attack Level (BAL) Certificate

Determined in accordance with AS 3959-2018

This Certificate has been issued by a person accredited by Fire Protection Association Australia under the Bushfire Planning and Design (BPAD) Accreditation Scheme. The certificate details the conclusions of the full Bushfire Attack Level Assessment Report (full report) prepared by the Accredited Practitioner.



Property Details and Description of Works

Address Details	Unit no	Street no	Lot no 266	Street name / Plan Reference Deposited Plan 431728	
	Suburb Viveash			State WA	Postcode 6056
Local government area	City of Swan				
Main BCA class of the building	N/A	Use(s) of the building	N/A		
Description of the building or works	Single lot				

Determination of Highest Bushfire Attack Level

AS 3959 Assessment Procedure	Vegetation Classification	Effective Slope	Separation Distance	BAL
Method 1	Class A - Forest	0-5 Downslope	18 m	BAL – FZ

BPAD Accredited Practitioner Details

Name Anthony Rowe (36690)	I hereby declare that I am a BPAD accredited bushfire practitioner.
Company Details Emerge Associates	
I hereby certify that I have undertaken the assessment of the above site and determined the Bushfire Attack Level stated above in accordance with the requirements of AS 3959-2018	Signature:   Date: 25 March 2026

Reliance on the assessment and determination of the Bushfire Attack Level contained in this certificate should not extend beyond a period of 12 months from the date of issue of the certificate. If this certificate was issued more than 12 months ago, it is recommended that the validity of the determination be confirmed with the Accredited Practitioner and where required an updated certificate issued.

Bushfire Attack Level Assessment

Rivermark Area 3 – Stage 5A Rivermark Area 3 – Stage 5A



Bushfire Attack Level (BAL) Certificate

Determined in accordance with AS 3959-2018

This Certificate has been issued by a person accredited by Fire Protection Association Australia under the Bushfire Planning and Design (BPAD) Accreditation Scheme. The certificate details the conclusions of the full Bushfire Attack Level Assessment Report (full report) prepared by the Accredited Practitioner.



Property Details and Description of Works

Address Details	Unit no	Street no	Lot no 267	Street name / Plan Reference Deposited Plan 431728	
	Suburb Viveash			State WA	Postcode 6056
Local government area	City of Swan				
Main BCA class of the building	N/A	Use(s) of the building	N/A		
Description of the building or works	Single lot				

Determination of Highest Bushfire Attack Level

AS 3959 Assessment Procedure	Vegetation Classification	Effective Slope	Separation Distance	BAL
Method 1	Class A - Forest	0-5 Downslope	18 m	BAL – FZ

BPAD Accredited Practitioner Details

Name Anthony Rowe (36690)	I hereby declare that I am a BPAD accredited bushfire practitioner.
Company Details Emerge Associates	
I hereby certify that I have undertaken the assessment of the above site and determined the Bushfire Attack Level stated above in accordance with the requirements of AS 3959-2018	Signature:   Date: 25 March 2026

Reliance on the assessment and determination of the Bushfire Attack Level contained in this certificate should not extend beyond a period of 12 months from the date of issue of the certificate. If this certificate was issued more than 12 months ago, it is recommended that the validity of the determination be confirmed with the Accredited Practitioner and where required an updated certificate issued.

Bushfire Attack Level Assessment

Rivermark Area 3 – Stage 5A Rivermark Area 3 – Stage 5A



Bushfire Attack Level (BAL) Certificate

Determined in accordance with AS 3959-2018

This Certificate has been issued by a person accredited by Fire Protection Association Australia under the Bushfire Planning and Design (BPAD) Accreditation Scheme. The certificate details the conclusions of the full Bushfire Attack Level Assessment Report (full report) prepared by the Accredited Practitioner.


Property Details and Description of Works

Address Details	Unit no	Street no	Lot no 268	Street name / Plan Reference Deposited Plan 431728	
	Suburb Viveash			State WA	Postcode 6056
Local government area	City of Swan				
Main BCA class of the building	N/A	Use(s) of the building	N/A		
Description of the building or works	Single lot				

Determination of Highest Bushfire Attack Level

AS 3959 Assessment Procedure	Vegetation Classification	Effective Slope	Separation Distance	BAL
Method 1	Class A - Forest	0-5 Downslope	18 m	BAL – FZ

BPAD Accredited Practitioner Details

Name Anthony Rowe (36690)	I hereby declare that I am a BPAD accredited bushfire practitioner.
Company Details Emerge Associates	
I hereby certify that I have undertaken the assessment of the above site and determined the Bushfire Attack Level stated above in accordance with the requirements of AS 3959-2018	Signature:  Date: 25 March 2026



Reliance on the assessment and determination of the Bushfire Attack Level contained in this certificate should not extend beyond a period of 12 months from the date of issue of the certificate. If this certificate was issued more than 12 months ago, it is recommended that the validity of the determination be confirmed with the Accredited Practitioner and where required an updated certificate issued.

Bushfire Attack Level Assessment

Rivermark Area 3 – Stage 5A Rivermark Area 3 – Stage 5A



Bushfire Attack Level (BAL) Certificate

Determined in accordance with AS 3959-2018

This Certificate has been issued by a person accredited by Fire Protection Association Australia under the Bushfire Planning and Design (BPAD) Accreditation Scheme. The certificate details the conclusions of the full Bushfire Attack Level Assessment Report (full report) prepared by the Accredited Practitioner.



Property Details and Description of Works

Address Details	Unit no	Street no	Lot no 269	Street name / Plan Reference Deposited Plan 431728	
	Suburb Viveash			State WA	Postcode 6056
Local government area	City of Swan				
Main BCA class of the building	N/A	Use(s) of the building	N/A		
Description of the building or works	Single lot				

Determination of Highest Bushfire Attack Level

AS 3959 Assessment Procedure	Vegetation Classification	Effective Slope	Separation Distance	BAL
Method 1	Class A - Forest	0-5 Downslope	18 m	BAL – FZ

BPAD Accredited Practitioner Details

Name Anthony Rowe (36690)	I hereby declare that I am a BPAD accredited bushfire practitioner.
Company Details Emerge Associates	
I hereby certify that I have undertaken the assessment of the above site and determined the Bushfire Attack Level stated above in accordance with the requirements of AS 3959-2018	Signature:   Date: 25 March 2026

Reliance on the assessment and determination of the Bushfire Attack Level contained in this certificate should not extend beyond a period of 12 months from the date of issue of the certificate. If this certificate was issued more than 12 months ago, it is recommended that the validity of the determination be confirmed with the Accredited Practitioner and where required an updated certificate issued.

Bushfire Attack Level Assessment

Rivermark Area 3 – Stage 5A Rivermark Area 3 – Stage 5A



Bushfire Attack Level (BAL) Certificate

Determined in accordance with AS 3959-2018

This Certificate has been issued by a person accredited by Fire Protection Association Australia under the Bushfire Planning and Design (BPAD) Accreditation Scheme. The certificate details the conclusions of the full Bushfire Attack Level Assessment Report (full report) prepared by the Accredited Practitioner.


Property Details and Description of Works

Address Details	Unit no	Street no	Lot no 270	Street name / Plan Reference Deposited Plan 431728	
	Suburb Viveash			State WA	Postcode 6056
Local government area	City of Swan				
Main BCA class of the building	N/A	Use(s) of the building	N/A		
Description of the building or works	Single lot				

Determination of Highest Bushfire Attack Level

AS 3959 Assessment Procedure	Vegetation Classification	Effective Slope	Separation Distance	BAL
Method 1	Class A - Forest	Downslope 0-5	53 m	BAL – 12.5

BPAD Accredited Practitioner Details

Name Anthony Rowe (36690)	I hereby declare that I am a BPAD accredited bushfire practitioner. Signature:  Date: 25 March 2026
Company Details Emerge Associates	
I hereby certify that I have undertaken the assessment of the above site and determined the Bushfire Attack Level stated above in accordance with the requirements of AS 3959-2018	



Reliance on the assessment and determination of the Bushfire Attack Level contained in this certificate should not extend beyond a period of 12 months from the date of issue of the certificate. If this certificate was issued more than 12 months ago, it is recommended that the validity of the determination be confirmed with the Accredited Practitioner and where required an updated certificate issued.

Bushfire Attack Level Assessment

Rivermark Area 3 – Stage 5A Rivermark Area 3 – Stage 5A



Bushfire Attack Level (BAL) Certificate

Determined in accordance with AS 3959-2018

This Certificate has been issued by a person accredited by Fire Protection Association Australia under the Bushfire Planning and Design (BPAD) Accreditation Scheme. The certificate details the conclusions of the full Bushfire Attack Level Assessment Report (full report) prepared by the Accredited Practitioner.



Property Details and Description of Works

Address Details	Unit no	Street no	Lot no 271	Street name / Plan Reference Deposited Plan 431728	
	Suburb Viveash			State WA	Postcode 6056
Local government area	City of Swan				
Main BCA class of the building	N/A		Use(s) of the building	N/A	
Description of the building or works	Single lot				

Determination of Highest Bushfire Attack Level

AS 3959 Assessment Procedure	Vegetation Classification	Effective Slope	Separation Distance	BAL
Method 1	Class A - Forest	Downslope 0-5	65 m	BAL – 12.5

BPAD Accredited Practitioner Details

Name Anthony Rowe (36690)	I hereby declare that I am a BPAD accredited bushfire practitioner.
Company Details Emerge Associates	
I hereby certify that I have undertaken the assessment of the above site and determined the Bushfire Attack Level stated above in accordance with the requirements of AS 3959-2018	Signature:   Date: 25 March 2026

Reliance on the assessment and determination of the Bushfire Attack Level contained in this certificate should not extend beyond a period of 12 months from the date of issue of the certificate. If this certificate was issued more than 12 months ago, it is recommended that the validity of the determination be confirmed with the Accredited Practitioner and where required an updated certificate issued.

Bushfire Attack Level Assessment

Rivermark Area 3 – Stage 5A Rivermark Area 3 – Stage 5A



Bushfire Attack Level (BAL) Certificate

Determined in accordance with AS 3959-2018

This Certificate has been issued by a person accredited by Fire Protection Association Australia under the Bushfire Planning and Design (BPAD) Accreditation Scheme. The certificate details the conclusions of the full Bushfire Attack Level Assessment Report (full report) prepared by the Accredited Practitioner.



Property Details and Description of Works

Address Details	Unit no	Street no	Lot no 272	Street name / Plan Reference Deposited Plan 431728	
	Suburb Viveash			State WA	Postcode 6056
Local government area	City of Swan				
Main BCA class of the building	N/A		Use(s) of the building	N/A	
Description of the building or works	Single lot				

Determination of Highest Bushfire Attack Level

AS 3959 Assessment Procedure	Vegetation Classification	Effective Slope	Separation Distance	BAL
Method 1	Class A - Forest	Downslope 0-5	75 m	BAL – 12.5

BPAD Accredited Practitioner Details

Name Anthony Rowe (36690)	I hereby declare that I am a BPAD accredited bushfire practitioner.
Company Details Emerge Associates	
I hereby certify that I have undertaken the assessment of the above site and determined the Bushfire Attack Level stated above in accordance with the requirements of AS 3959-2018	Signature:   Date: 25 March 2026

Reliance on the assessment and determination of the Bushfire Attack Level contained in this certificate should not extend beyond a period of 12 months from the date of issue of the certificate. If this certificate was issued more than 12 months ago, it is recommended that the validity of the determination be confirmed with the Accredited Practitioner and where required an updated certificate issued.

Bushfire Attack Level Assessment

Rivermark Area 3 – Stage 5A Rivermark Area 3 – Stage 5A



Bushfire Attack Level (BAL) Certificate

Determined in accordance with AS 3959-2018

This Certificate has been issued by a person accredited by Fire Protection Association Australia under the Bushfire Planning and Design (BPAD) Accreditation Scheme. The certificate details the conclusions of the full Bushfire Attack Level Assessment Report (full report) prepared by the Accredited Practitioner.



Property Details and Description of Works

Address Details	Unit no	Street no	Lot no 273	Street name / Plan Reference Deposited Plan 431728	
	Suburb Viveash			State WA	Postcode 6056
Local government area	City of Swan				
Main BCA class of the building	N/A		Use(s) of the building	N/A	
Description of the building or works	Single lot				

Determination of Highest Bushfire Attack Level

AS 3959 Assessment Procedure	Vegetation Classification	Effective Slope	Separation Distance	BAL
Method 1	Class A - Forest	Downslope 0-5	92 m	BAL – 12.5

BPAD Accredited Practitioner Details

Name Anthony Rowe (36690)	I hereby declare that I am a BPAD accredited bushfire practitioner.
Company Details Emerge Associates	
I hereby certify that I have undertaken the assessment of the above site and determined the Bushfire Attack Level stated above in accordance with the requirements of AS 3959-2018	Signature:   Date: 25 March 2026

Reliance on the assessment and determination of the Bushfire Attack Level contained in this certificate should not extend beyond a period of 12 months from the date of issue of the certificate. If this certificate was issued more than 12 months ago, it is recommended that the validity of the determination be confirmed with the Accredited Practitioner and where required an updated certificate issued.

Bushfire Attack Level Assessment

Rivermark Area 3 – Stage 5A Rivermark Area 3 – Stage 5A



Bushfire Attack Level (BAL) Certificate

Determined in accordance with AS 3959-2018

This Certificate has been issued by a person accredited by Fire Protection Association Australia under the Bushfire Planning and Design (BPAD) Accreditation Scheme. The certificate details the conclusions of the full Bushfire Attack Level Assessment Report (full report) prepared by the Accredited Practitioner.


Property Details and Description of Works

Address Details	Unit no	Street no	Lot no 274	Street name / Plan Reference Deposited Plan 431728	
	Suburb Viveash			State WA	Postcode 6056
Local government area	City of Swan				
Main BCA class of the building	N/A		Use(s) of the building	N/A	
Description of the building or works	Single lot				

Determination of Highest Bushfire Attack Level

AS 3959 Assessment Procedure	Vegetation Classification	Effective Slope	Separation Distance	BAL
Method 1	Excludable – Clause 2.2.3.2(e)	N/A	>100 m	BAL – LOW

BPAD Accredited Practitioner Details

Name Anthony Rowe (36690)	I hereby declare that I am a BPAD accredited bushfire practitioner. Signature:  Date: 25 March 2026
Company Details Emerge Associates	
I hereby certify that I have undertaken the assessment of the above site and determined the Bushfire Attack Level stated above in accordance with the requirements of AS 3959-2018	



Reliance on the assessment and determination of the Bushfire Attack Level contained in this certificate should not extend beyond a period of 12 months from the date of issue of the certificate. If this certificate was issued more than 12 months ago, it is recommended that the validity of the determination be confirmed with the Accredited Practitioner and where required an updated certificate issued.

Bushfire Attack Level Assessment

Rivermark Area 3 – Stage 5A Rivermark Area 3 – Stage 5A



Bushfire Attack Level (BAL) Certificate

Determined in accordance with AS 3959-2018

This Certificate has been issued by a person accredited by Fire Protection Association Australia under the Bushfire Planning and Design (BPAD) Accreditation Scheme. The certificate details the conclusions of the full Bushfire Attack Level Assessment Report (full report) prepared by the Accredited Practitioner.


Property Details and Description of Works

Address Details	Unit no	Street no	Lot no 275	Street name / Plan Reference Deposited Plan 431728	
	Suburb Viveash			State WA	Postcode 6056
Local government area	City of Swan				
Main BCA class of the building	N/A		Use(s) of the building	N/A	
Description of the building or works	Single lot				

Determination of Highest Bushfire Attack Level

AS 3959 Assessment Procedure	Vegetation Classification	Effective Slope	Separation Distance	BAL
Method 1	Excludable – Clause 2.2.3.2(e)	N/A	>100 m	BAL – LOW

BPAD Accredited Practitioner Details

Name Anthony Rowe (36690)	I hereby declare that I am a BPAD accredited bushfire practitioner. Signature:  Date: 25 March 2026
Company Details Emerge Associates	
I hereby certify that I have undertaken the assessment of the above site and determined the Bushfire Attack Level stated above in accordance with the requirements of AS 3959-2018	



Reliance on the assessment and determination of the Bushfire Attack Level contained in this certificate should not extend beyond a period of 12 months from the date of issue of the certificate. If this certificate was issued more than 12 months ago, it is recommended that the validity of the determination be confirmed with the Accredited Practitioner and where required an updated certificate issued.

Bushfire Attack Level Assessment

Rivermark Area 3 – Stage 5A Rivermark Area 3 – Stage 5A



Bushfire Attack Level (BAL) Certificate

Determined in accordance with AS 3959-2018

This Certificate has been issued by a person accredited by Fire Protection Association Australia under the Bushfire Planning and Design (BPAD) Accreditation Scheme. The certificate details the conclusions of the full Bushfire Attack Level Assessment Report (full report) prepared by the Accredited Practitioner.



Property Details and Description of Works

Address Details	Unit no	Street no	Lot no 278	Street name / Plan Reference Deposited Plan 431728	
	Suburb Viveash			State WA	Postcode 6056
Local government area	City of Swan				
Main BCA class of the building	N/A		Use(s) of the building	N/A	
Description of the building or works	Single lot				

Determination of Highest Bushfire Attack Level

AS 3959 Assessment Procedure	Vegetation Classification	Effective Slope	Separation Distance	BAL
Method 1	Excludable – Clause 2.2.3.2(e)	N/A	>100 m	BAL – LOW

BPAD Accredited Practitioner Details

Name Anthony Rowe (36690)	I hereby declare that I am a BPAD accredited bushfire practitioner.
Company Details Emerge Associates	
I hereby certify that I have undertaken the assessment of the above site and determined the Bushfire Attack Level stated above in accordance with the requirements of AS 3959-2018	Signature:   Date: 25 March 2026

Reliance on the assessment and determination of the Bushfire Attack Level contained in this certificate should not extend beyond a period of 12 months from the date of issue of the certificate. If this certificate was issued more than 12 months ago, it is recommended that the validity of the determination be confirmed with the Accredited Practitioner and where required an updated certificate issued.