

# Sustainability Incentive Program



# RIVERMARK

• VIVEASH •

## Standard inclusion



### FENCING AND WATERWISE FRONT LANDSCAPING

All Rivermark homes will receive fencing and waterwise front landscaping ensuring streetscapes flow naturally into one another and mirror their riverside setting.

Woodland Grey colourbond fencing will be installed to the side and rear of the property, providing a style appropriate to the design of the home and its streetscape.

Waterwise front landscaping will include native plants and suitable groundcover materials at the front of homes.

Fencing and landscaping will be supplied through Rivermark's appointed landscape contractor.

## Your choice

Select from one of the below.

### CHOICE A



### E-BIKE/E-SCOOTER PACKAGE

Embrace the great outdoors and Rivermark's idyllic natural landscape with an emissions-free, easy to transport e-bike or e-scooter.

Following slab-down, choose your preferred e-bike and/or e-scooter package through 99 Bikes. The offer will enable you to purchase from a range of e-bikes or e-scooters, making this the ideal way for the family to spend quality time together.

### CHOICE B



### ACOUSTIC UPGRADES

Receive a contribution toward your choice of upgrades to reduce incoming noise. Select from either:

- External sliding doors, bi-fold doors or similar fitted with acoustic seals, and 35mm timber core entry door or timber core door to external facing habitable rooms with full perimeter acoustic seals OR
- All external glazing installed at a minimum thickness of 6mm.

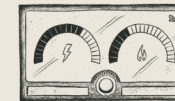
### CHOICE C



### WATERWISE REAR LANDSCAPING

Following the completion of construction, receive a contribution toward rear waterwise landscaping and irrigation supplied through Rivermark's appointed landscape contractor.

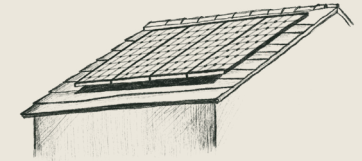
### CHOICE D



### ENERGY & UTILITIES UPGRADE

Receive a contribution toward energy and utilities upgrades, including a heat pump hot water system and a Wi-Fi enabled Smart Meter and irrigation controller.

## Optional inclusion\*



### SOLAR MAXIMISER SERVICE

Be part of the energy transition with a battery solar service that allows excess power generated by rooftop solar panels to be stored for use in the evening, reducing residents' carbon footprint and saving money on their electricity bill.

Residents that choose to take up this offer will receive a high quality 13.7 kWh battery fully installed, serviced and maintained. There are no upfront costs and just a low monthly subscription fee for the service. Savings on a typical household's power bills are expected to be more than the monthly subscription fee.

Residents that wish to take up this offer must have at least 6.3kW of rooftop solar panels installed at their Rivermark home.

\*Optional for residents - monthly fee associated and at least 6.3kW of solar panels must be installed.